

Anti-NFIA antibody (180-330) (STJ24756)

GENERAL INFORMATION

Product Type	Primary antibodies
Applications	WB/IHC-P/IF/ICC/ELISA
Host / Source	Rabbit
Reactivity	Human/Mouse/Rat

PRODUCT PROPERTIES

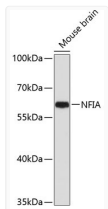
Clonality	Polyclonal
Concentration	Lot specific
Conjugation	Unconjugated
Purification	Affinity purification
Dilution Range	WB:1:200-1:2000 IHC-P:1:50-1:200 IF:1:50-1:200 ELISA:Recommended starting concentration is 1 Mu g/mL. Please optimize the concentration based on your specific assay requirements.
Formulation	PBS with 0.02% Sodium Azide, 50% Glycerol, pH 7.3.
Isotype	IgG
Molecular Weight	Protein Mw: 56kDa Observed Mw: 60kDa
Storage Instruction	Store at -20°C for up to 1 year from the date of receipt, and avoid repeat freeze-thaw cycles.

TARGET INFORMATION

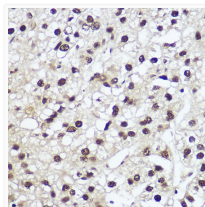
Gene ID	4774
Gene Symbol	NFIA
UniProt ID	NFIA_HUMAN
Immunogen Region	180-330
Immunogen Sequence	AYFVHAADSSQSESPSQPSD ADIKDQPENHGLGFQDSFVT SGVFSVTELVRVSQTPIAAG TGNFNSLDLESSSYMSMP GAMRRSLPSTSSSTSSTKRLK SVEDEMDSPGEEPFFYTGQGR SPGSGSQSSGWHEVEPGMPS PTTLKKSEKSG
Specificity	Recombinant fusion protein containing a sequence corresponding to amino acids 180-330 of human NFIA (NP_005586.1).

ADDITIONAL INFORMATION

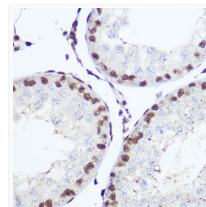
Note **STRICTLY FOR FURTHER SCIENTIFIC RESEARCH USE ONLY (RUO). MUST NOT TO BE USED IN DIAGNOSTIC OR THERAPEUTIC APPLICATIONS.**



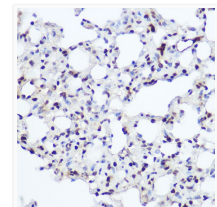
Western blot analysis of extracts of mouse brain, using NFIA antibody (STJ24756) at 1:1000 dilution. Secondary antibody: HRP Goat Anti-rabbit IgG (H+L) (STJS000856) at 1:10000 dilution. Lysates/proteins: 25 Mu g per lane. Blocking buffer: 3% non-fat dry milk in TBST. Detection: ECL Basic Kit. Exposure time: 60s.



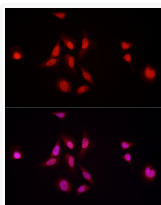
Immunohistochemistry analysis of paraffin-embedded human liver cancer using NFIA rabbit polyclonal antibody (STJ24756) at dilution of 1:200 (40x lens). Perform high pressure antigen retrieval with 10 mM citrate buffer pH 6. 0 before commencing with immunohistochemistry staining protocol.



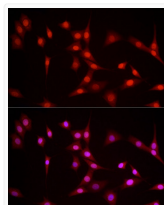
Immunohistochemistry analysis of paraffin-embedded mouse testis using NFIA rabbit polyclonal antibody (STJ24756) at dilution of 1:200 (40x lens). Perform high pressure antigen retrieval with 10 mM citrate buffer pH 6. 0 before commencing with immunohistochemistry staining protocol.



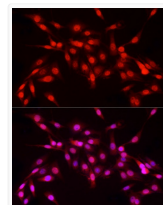
Immunohistochemistry analysis of paraffin-embedded rat lung using NFIA rabbit polyclonal antibody (STJ24756) at dilution of 1:200 (40x lens). Perform high pressure antigen retrieval with 10 mM citrate buffer pH 6. 0 before commencing with immunohistochemistry staining protocol.



Immunofluorescence analysis of HeLa cells using NFIA rabbit polyclonal antibody (STJ24756) at dilution of 1:100 (40x lens). Blue: DAPI for nuclear staining.



Immunofluorescence analysis of NIH/3T3 cells using NFIA rabbit polyclonal antibody (STJ24756) at dilution of 1:100 (40x lens). Blue: DAPI for nuclear staining.



Immunofluorescence analysis of PC-12 cells using NFIA rabbit polyclonal antibody (STJ24756) at dilution of 1:100 (40x lens). Blue: DAPI for nuclear staining.