

## Anti-NBR1 antibody (1-966) (STJ24692)

### GENERAL INFORMATION

Product Type	Primary antibodies
Applications	WB/IHC-P/IF/ICC/ELISA
Host / Source	Rabbit
Reactivity	Human/Mouse/Rat

### PRODUCT PROPERTIES

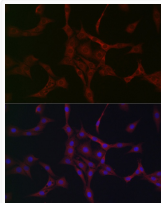
Clonality	Polyclonal
Concentration	Lot specific
Conjugation	Unconjugated
Purification	Affinity purification
Dilution Range	WB:1:100-1:500 IHC-P:1:50-1:200 IF/ICC:1:50-1:200 ELISA:Recommended starting concentration is 1 $\mu$ g/mL. Please optimize the concentration based on your specific assay requirements.
Formulation	PBS with 0.02% Sodium Azide, 50% Glycerol, pH 7.3.
Isotype	IgG
Molecular Weight	Protein Mw: 107kDa Observed Mw: 120kDa
Storage Instruction	Store at -20°C for up to 1 year from the date of receipt, and avoid repeat freeze-thaw cycles.

### TARGET INFORMATION

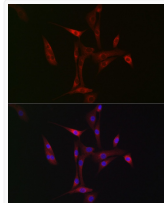
Gene ID	<a href="#">4077</a>
Gene Symbol	<a href="#">NBR1</a>
UniProt ID	<a href="#">NBR1_HUMAN</a>
Immunogen Region	1-966
Immunogen Sequence	MEPQVTLNVTFKNEIQSFLV SDPENTTWADIEAMVKVSFD LNTIQIKYLDEENEEVSINS QGEYEEALKMAVKQGNQLQM QVHEG
Specificity	Recombinant fusion protein containing a sequence corresponding to amino acids 1-85 of human NBR1 (NP_005890.2).

### ADDITIONAL INFORMATION

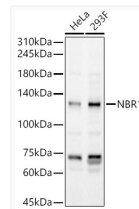
Note **STRICTLY FOR FURTHER SCIENTIFIC RESEARCH USE ONLY (RUO). MUST NOT TO BE USED IN DIAGNOSTIC OR THERAPEUTIC APPLICATIONS.**



Immunofluorescence analysis of PC-12 cells using NBR1 Rabbit polyclonal antibody (STJ24692) at dilution of 1:50 (40x lens). Blue: DAPI for nuclear staining.



Immunofluorescence analysis of NIH/3T3 cells using NBR1 Rabbit polyclonal antibody (STJ24692) at dilution of 1:50 (40x lens). Blue: DAPI for nuclear staining.



Western blot analysis of various lysates, using NBR1 antibody (STJ24692) at 1:400 dilution. Secondary antibody: HRP Goat Anti-Rabbit IgG (H+L) (STJS000856) at 1:10000 dilution. Lysates/proteins: 25  $\mu$ g per lane. Blocking buffer: 3% nonfat dry milk in TBST. Detection: ECL Basic Kit. Exposure time: 60s.