

Anti-MYL9 antibody (1-100) (STJ24667)

GENERAL INFORMATION

Product Type	Primary antibodies
Applications	WB/IF/ICC/ELISA
Host / Source	Rabbit
Reactivity	Human/Mouse/Rat

PRODUCT PROPERTIES

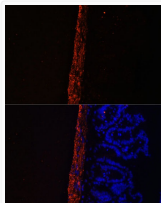
Clonality	Polyclonal
Concentration	Lot specific
Conjugation	Unconjugated
Purification	Affinity purification
Dilution Range	WB:1:500-1:1000 IF/CC:1:50-1:200 ELISA:Recommended starting concentration is 1 μ g/mL. Please optimize the concentration based on your specific assay requirements.
Formulation	PBS with 0.05% Proclin300, 50% Glycerol, pH 7.3.
Isotype	IgG
Molecular Weight	Protein Mw: 20kDa Observed Mw: 18kDa
Storage Instruction	Store at -20°C for up to 1 year from the date of receipt, and avoid repeat freeze-thaw cycles.

TARGET INFORMATION

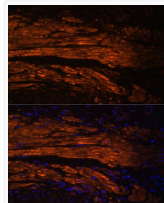
Gene ID	10398
Gene Symbol	MYL9
UniProt ID	MYL9_HUMAN
Immunogen Region	1-100
Immunogen Sequence	MSSKRAKAKTTKKRPQRATS NVFAMFDQSQIQEFKEAFNM IDQNRDGFIDKEDLDHMLAS LGKNPTDEYLEGMMSEAPGP INFTMFLTMFGEKLNGLTDP
Specificity	A synthetic peptide corresponding to a sequence within amino acids 1-100 of human MYL9 (NP_006088.2).

ADDITIONAL INFORMATION

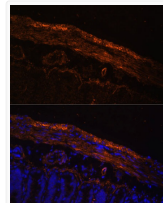
Note STRICTLY FOR FURTHER SCIENTIFIC RESEARCH USE ONLY (RUO). MUST NOT TO BE USED IN DIAGNOSTIC OR THERAPEUTIC APPLICATIONS.



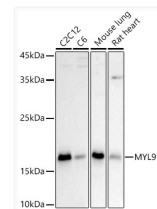
Immunofluorescence analysis of Mouse intestine using MYL9 antibody (STJ24667) at dilution of 1:100. Blue: DAPI for nuclear staining.



Immunofluorescence analysis of Human colon carcinoma using MYL9 antibody (STJ24667) at dilution of 1:100. Blue: DAPI for nuclear staining.



Immunofluorescence analysis of Rat intestine using MYL9 antibody (STJ24667) at dilution of 1:100. Blue: DAPI for nuclear staining.



Western blot analysis of extracts of various cell lines, using MYL9 antibody (STJ24667) at 1:1000 dilution. Secondary antibody: HRP Goat Anti-Rabbit IgG (H+L) (STJS000856) at 1:10000 dilution. Lysates/proteins: 25 μ g per lane. Blocking buffer: 3% nonfat dry milk in TBST. Detection: ECL Basic Kit. Exposure time: 90s.