

Anti-MYCN antibody (168-267) (STJ24658)

GENERAL INFORMATION

Product Type	Primary antibodies
Applications	WB/IHC-P/IF/ICC/ELISA
Host / Source	Rabbit
Reactivity	Human/Mouse/Rat

PRODUCT PROPERTIES

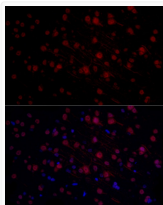
Clonality	Polyclonal
Concentration	Lot specific
Conjugation	Unconjugated
Purification	Affinity purification
Dilution Range	WB:1:100-1:500 IHC-P:1:50-1:200 IF/ICC:1:50-1:200 ELISA:Recommended starting concentration is 1 µg/mL. Please optimize the concentration based on your specific assay requirements.
Formulation	PBS with 0.02% Sodium Azide, 50% Glycerol, pH 7.3.
Isotype	IgG
Molecular Weight	Protein Mw: 50kDa Observed Mw: 62kDa
Storage Instruction	Store at -20°C for up to 1 year from the date of receipt, and avoid repeat freeze-thaw cycles.

TARGET INFORMATION

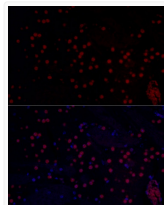
Gene ID	4613
Gene Symbol	MYCN
UniProt ID	MYCN_HUMAN
Immunogen Region	168-267
Immunogen Sequence	AGRAGAALPAELAHAAECV DPAVVFPPVFNKREPAPVPA APASAPAAGPAVASGAGIAA PAGAPGVAPPRPGRQTS GG DHKALSTSGEDTLSDSDDED
Specificity	Recombinant fusion protein containing a sequence corresponding to amino acids 168-267 of human N-Myc/MYCN (NP_005369.2).

ADDITIONAL INFORMATION

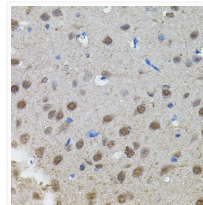
Note **STRICTLY FOR FURTHER SCIENTIFIC RESEARCH USE ONLY (RUO). MUST NOT TO BE USED IN DIAGNOSTIC OR THERAPEUTIC APPLICATIONS.**



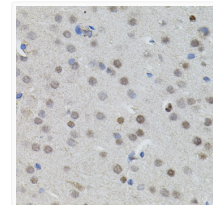
Immunofluorescence analysis of rat brain using N-Myc/MYCN Rabbit polyclonal antibody (STJ24658) at dilution of 1:50 (40x lens). Blue: DAPI for nuclear staining.



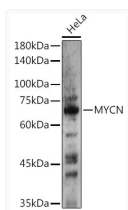
Immunofluorescence analysis of mouse brain using N-Myc/MYCN Rabbit polyclonal antibody (STJ24658) at dilution of 1:50 (40x lens). Blue: DAPI for nuclear staining.



Immunohistochemistry analysis of paraffin-embedded rat brain using N-Myc/MYCN antibody (STJ24658) (40x lens). Perform microwave antigen retrieval with 10 mM PBS buffer pH 7.2 before commencing with immunohistochemistry staining protocol.



Immunohistochemistry analysis of paraffin-embedded mouse brain using N-Myc/MYCN antibody (STJ24658) (40x lens). Perform microwave antigen retrieval with 10 mM PBS buffer pH 7.2 before commencing with immunohistochemistry staining protocol.



Western blot analysis of extracts of HeLa cells, using N-Myc/MYCN antibody (STJ24658) at 1:500 dilution. Secondary antibody: HRP Goat Anti-Rabbit IgG (H+L) (STJS000856) at 1:10000 dilution. Lysates/proteins: 25 µg per lane. Blocking buffer: 3% nonfat dry milk in TBST. Detection: ECL Basic Kit. Exposure time: 180s.