

## Anti-MX1 antibody (200-300) (STJ24650)

### GENERAL INFORMATION

Product Type	Primary antibodies
Applications	WB/IHC-P/IF/ICC/ELISA
Host / Source	Rabbit
Reactivity	Human/Mouse

### PRODUCT PROPERTIES

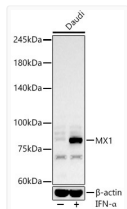
Clonality	Polyclonal
Concentration	Lot specific
Conjugation	Unconjugated
Purification	Affinity purification
Dilution Range	WB:1:500-1:1000 IHC-P:1:50-1:200 IF/ICC:1:50-1:200 ELISA:Recommended starting concentration is 1 Mu g/mL. Please optimize the concentration based on your specific assay requirements.
Formulation	PBS with 0.05% Proclin300, 50% Glycerol, pH 7.3.
Isotype	IgG
Molecular Weight	Protein Mw: 76kDa Observed Mw: 76kDa
Storage Instruction	Store at -20°C for up to 1 year from the date of receipt, and avoid repeat freeze-thaw cycles.

### TARGET INFORMATION

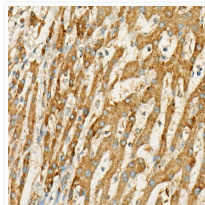
Gene ID	<a href="#">4599</a>
Gene Symbol	<a href="#">MX1</a>
UniProt ID	<a href="#">MX1_HUMAN</a>
Immunogen Region	200-300
Immunogen Sequence	TLIKKYIQRQETISLVVPS NVDIATTEALSMAQEVDPEG DRTIGILT KPDLDVKGTEDEK VVDVVRNLVFLHKKGYMIVK CRGQQEIQDQLSLSEALQRE K
Specificity	Recombinant fusion protein containing a sequence corresponding to amino acids 200-300 of human MX1 (NP_001171517.1).

### ADDITIONAL INFORMATION

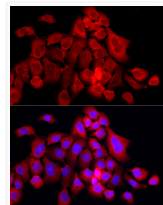
Note **STRICTLY FOR FURTHER SCIENTIFIC RESEARCH USE ONLY (RUO). MUST NOT TO BE USED IN DIAGNOSTIC OR THERAPEUTIC APPLICATIONS.**



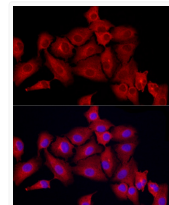
Western blot analysis of Daudi, using MX1 antibody (STJ24650) at 1:600 dilution. Daudi cells were treated by IFN-Alpha (100 ng/ml) at 37 °C for 30 minutes after serum-starvation overnight. Secondary antibody: HRP Goat Anti-rabbit IgG (H+L) (STJS000856) at 1:10000 dilution. Lysates/proteins: 25 Mu g per lane. Blocking buffer: 3% non-fat dry milk in TBST. Detection: ECL Basic Kit. Exposure time: 60s.



Immunohistochemistry analysis of paraffin-embedded human liver cancer using MX1 rabbit polyclonal antibody (STJ24650) at dilution of 1:50 (40x lens). Perform high pressure antigen retrieval with 10 mM citrate buffer pH 6.0 before commencing with immunohistochemistry staining protocol.



Immunofluorescence analysis of A431 cells using MX1 rabbit polyclonal antibody (STJ24650) at dilution of 1:50 (40x lens). Blue: DAPI for nuclear staining.



Immunofluorescence analysis of A-549 cells using MX1 rabbit polyclonal antibody (STJ24650) at dilution of 1:50 (40x lens). Blue: DAPI for nuclear staining.