

Anti-MTTP antibody (590-894) (STJ24638)

GENERAL INFORMATION

Product Type	Primary antibodies
Applications	WB/IF/ICC/ELISA
Host / Source	Rabbit
Reactivity	Mouse/Rat

PRODUCT PROPERTIES

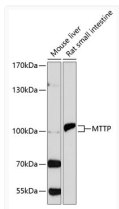
Clonality	Polyclonal
Concentration	Lot specific
Conjugation	Unconjugated
Purification	Affinity purification
Dilution Range	WB:1:500-1:2000 IF/CC:1:50-1:200 ELISA:Recommended starting concentration is 1 Mu g/mL. Please optimize the concentration based on your specific assay requirements.
Formulation	PBS with 0.05% Proclin300, 50% Glycerol, pH 7.3.
Isotype	IgG
Molecular Weight	Protein Mw: 99kDa Observed Mw: 99kDa
Storage Instruction	Store at -20°C for up to 1 year from the date of receipt, and avoid repeat freeze-thaw cycles.

TARGET INFORMATION

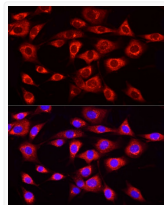
Gene ID	4547
Gene Symbol	MTTP
UniProt ID	MTP_HUMAN
Immunogen Region	590-894
Immunogen Sequence	NNPSYMDVKNILLSIGELPQ EMNKYMLAIVQDILRFEMPA SKIVRRVLKEMVAHNYDRFS RSGSSSAYTGYIERSPRSAS TYSLDILYSGSGILRRSNLN IFQYIGKAGLHGSQVVEAQ GLEALIAATPDEGEENLDSY AGMSAILFDVQLRPVTFNFG YSDLMSKMLSASGDPISVVK GLILLIDHSQELQLQSLKA NIEVQGGGLAIDISGAMEFSL WYRESKTRVKNRVTVVITT
Specificity	A synthetic peptide corresponding to a sequence within amino acids 550-650 of human MTTP (NP_000244.2).

ADDITIONAL INFORMATION

Note **STRICTLY FOR FURTHER SCIENTIFIC RESEARCH USE ONLY (RUO). MUST NOT TO BE USED IN DIAGNOSTIC OR THERAPEUTIC APPLICATIONS.**



Western blot analysis of extracts of various cell lines, using MTTP antibody (STJ24638) at 1:1000 dilution. Secondary antibody: HRP Goat Anti-rabbit IgG (H+L) (STJS000856) at 1:10000 dilution. Lysates/proteins: 25 Mu g per lane. Blocking buffer: 3% non-fat dry milk in TBST. Detection: ECL Basic Kit. Exposure time: 90s.



Immunofluorescence analysis of NIH/3T3 cells using MTTP rabbit polyclonal antibody (STJ24638) at dilution of 1:20 (40x lens). Blue: DAPI for nuclear staining.