

Anti-MRE11 antibody (1-302) (STJ24608)

GENERAL INFORMATION

Product Type	Primary antibodies
Applications	WB/IHC-P/ELISA
Host / Source	Rabbit
Reactivity	Human/Mouse

PRODUCT PROPERTIES

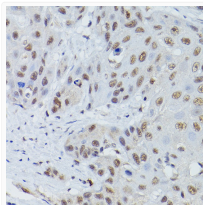
Clonality	Polyclonal
Concentration	Lot specific
Conjugation	Unconjugated
Purification	Affinity purification
Dilution Range	WB:1:500-1:1000 IHC-P:1:50-1:200 ELISA:Recommended starting concentration is 1 Mu g/mL. Please optimize the concentration based on your specific assay requirements.
Formulation	PBS with 0.05% Proclin300, 50% Glycerol, pH 7.3.
Isotype	IgG
Molecular Weight	Protein Mw: 81kDa Observed Mw: 81kDa
Storage Instruction	Store at -20°C for up to 1 year from the date of receipt, and avoid repeat freeze-thaw cycles.

TARGET INFORMATION

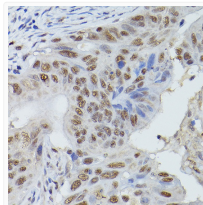
Gene ID	4361
Gene Symbol	MRE11
UniProt ID	MRE11_HUMAN
Immunogen Region	1-302
Immunogen Sequence	MSTADALDDENTFKILVATD IHLGFMEKDAVRGNDTFVTL DEILRLAQENEVDFILLGGD LFHENKPSRKTLLHTCLELLR KYCMGDRPVQFEILSDQSVN FGFSKFPWVNYQDGNLNISI PVFSIHGNHDDPTGADALCA LDILSCAGFVNHFGRSMSVE KIDISPVLLQKGSTKIALYG LGSIPDERLYRMFVNKKVTM LRPKEDENSWFNLFVIHQNR SKHGSTNFIPEQFLDDFD
Specificity	Recombinant fusion protein containing a sequence corresponding to amino acids 1-302 of human MRE11 (NP_005582.1).

ADDITIONAL INFORMATION

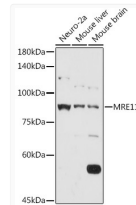
Note **STRICTLY FOR FURTHER SCIENTIFIC RESEARCH USE ONLY (RUO). MUST NOT TO BE USED IN DIAGNOSTIC OR THERAPEUTIC APPLICATIONS.**



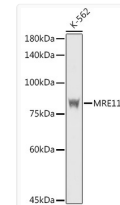
Immunohistochemistry analysis of paraffin-embedded human esophageal cancer using MRE11 Rabbit polyclonal antibody (STJ24608) at dilution of 1:50 (40x lens). Perform high pressure antigen retrieval with 10 mM citrate buffer pH 6.0 before commencing with immunohistochemistry staining protocol.



Immunohistochemistry analysis of paraffin-embedded human colon carcinoma using MRE11 Rabbit polyclonal antibody (STJ24608) at dilution of 1:50 (40x lens). Perform high pressure antigen retrieval with 10 mM citrate buffer pH 6.0 before commencing with immunohistochemistry staining protocol.



Western blot analysis of extracts of various cell lines, using MRE11 antibody (STJ24608) at 1:1000 dilution. Secondary antibody: HRP Goat Anti-Rabbit IgG (H+L) (STJS000856) at 1:10000 dilution. Lysates/proteins: 25 Mu g per lane. Blocking buffer: 3% nonfat dry milk in TBST. Detection: ECL Basic Kit. Exposure time: 180s.



Western blot analysis of extracts of K-562 cells, using MRE11 antibody (STJ24608) at 1:1000 dilution. Secondary antibody: HRP Goat Anti-Rabbit IgG (H+L) (STJS000856) at 1:10000 dilution. Lysates/proteins: 25 Mu g per lane. Blocking buffer: 3% nonfat dry milk in TBST. Detection: ECL Basic Kit. Exposure time: 60s.