

Anti-MMP25 antibody (350-540) (STJ24585)

GENERAL INFORMATION

Product Type	Primary antibodies
Applications	WB/IF/ICC/ELISA
Host / Source	Rabbit
Reactivity	Human/Mouse/Rat

PRODUCT PROPERTIES

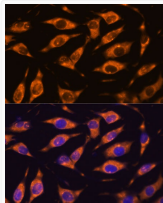
Clonality	Polyclonal
Concentration	Lot specific
Conjugation	Unconjugated
Purification	Affinity purification
Dilution Range	WB:1:500-1:2000 IF/CC:1:50-1:200 ELISA:Recommended starting concentration is 1 μ g/mL. Please optimize the concentration based on your specific assay requirements.
Formulation	PBS with 0.01% Thimerosal, 50% Glycerol, pH 7.3.
Isotype	IgG
Molecular Weight	Protein Mw: 63kDa Observed Mw: 70kDa
Storage Instruction	Store at -20°C for up to 1 year from the date of receipt, and avoid repeat freeze-thaw cycles.

TARGET INFORMATION

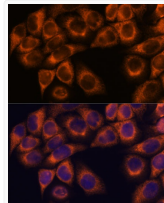
Gene ID	64386
Gene Symbol	MMP25
UniProt ID	MMP25_HUMAN
Immunogen Region	350-540
Immunogen Sequence	SPRPARLHRFWEGLPAQVRV VQAAYARHRDGRILLFSGPQ FWVFQDRQLEGGARPLTELG LPPGEEVDAVFSWPQNGKTY LVRGRQYWRDYDEAAARPDG YPRDLSLWEGAPSPDDVT SNAGDTYFFKGAHYWRFPKN SIKTEPDAPQPMGPNWLDLCP APSSGPRAPRPKATPVSET CDCQCELNQAA
Specificity	Recombinant fusion protein containing a sequence corresponding to amino acids 350-540 of human MMP25 (NP_071913.1).

ADDITIONAL INFORMATION

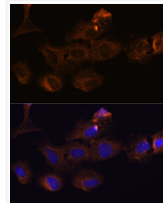
Note **STRICTLY FOR FURTHER SCIENTIFIC RESEARCH USE ONLY (RUO). MUST NOT TO BE USED IN DIAGNOSTIC OR THERAPEUTIC APPLICATIONS.**



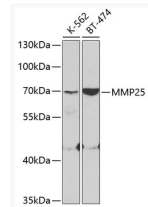
Immunofluorescence analysis of L929 cells using MMP25 antibody (STJ24585) at dilution of 1:100. Blue: DAPI for nuclear staining.



Immunofluorescence analysis of HeLa cells using MMP25 antibody (STJ24585) at dilution of 1:100. Blue: DAPI for nuclear staining.



Immunofluorescence analysis of C6 cells using MMP25 antibody (STJ24585) at dilution of 1:100. Blue: DAPI for nuclear staining.



Western blot analysis of extracts of various cell lines, using MMP25 antibody (STJ24585) at 1:400 dilution. Secondary antibody: HRP Goat Anti-Rabbit IgG (H+L) (STJS000856) at 1:10000 dilution. Lysates/proteins: 25 μ g per lane. Blocking buffer: 3% nonfat dry milk in TBST.