

Anti-MMP14 antibody (75-174) (STJ24578)

GENERAL INFORMATION

Product Type	Primary antibodies
Applications	WB/IHC-P/IF/ICC/ELISA
Host / Source	Rabbit
Reactivity	Human/Mouse/Rat

PRODUCT PROPERTIES

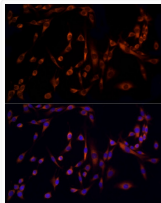
Clonality	Polyclonal
Concentration	Lot specific
Conjugation	Unconjugated
Purification	Affinity purification
Dilution Range	WB:1:500-1:1000 IHC-P:1:50-1:200 IF/ICC:1:50-1:200 ELISA:Recommended starting concentration is 1 μ g/mL. Please optimize the concentration based on your specific assay requirements.
Formulation	PBS with 0.05% Proclin300, 50% Glycerol, pH 7.3.
Isotype	IgG
Molecular Weight	Protein Mw: 66kDa Observed Mw: 60kDa
Storage Instruction	Store at -20°C for up to 1 year from the date of receipt, and avoid repeat freeze-thaw cycles.

TARGET INFORMATION

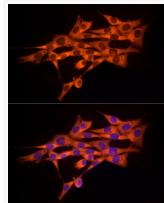
Gene ID	4323
Gene Symbol	MMP14
UniProt ID	MMP14_HUMAN
Immunogen Region	75-174
Immunogen Sequence	QVTGKADADTMKAMRRPRCG VPDKFGAEIKANVRRKRYAI QGLKWQHNEITFCIQNYTPK VGEYATYEAIRKAFRVWESA TPLRFREVPYAYIREGHEKQ
Specificity	A synthetic peptide corresponding to a sequence within amino acids 75-174 of human MMP14/MMP14/MT1-MMP (NP_004986.1).

ADDITIONAL INFORMATION

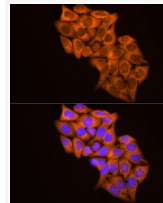
Note **STRICTLY FOR FURTHER SCIENTIFIC RESEARCH USE ONLY (RUO). MUST NOT TO BE USED IN DIAGNOSTIC OR THERAPEUTIC APPLICATIONS.**



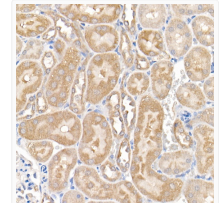
Immunofluorescence analysis of PC-12 cells using MMP14/MT1-MMP Rabbit polyclonal antibody (STJ24578) at dilution of 1:100 (40x lens). Secondary antibody: Cy3 Goat Anti-Rabbit IgG (H+L) at 1:500 dilution. Blue: DAPI for nuclear staining.



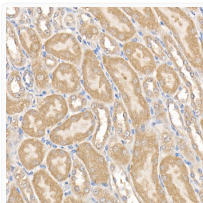
Immunofluorescence analysis of NIH/3T3 cells using MMP14/MT1-MMP Rabbit polyclonal antibody (STJ24578) at dilution of 1:100 (40x lens). Secondary antibody: Cy3 Goat Anti-Rabbit IgG (H+L) at 1:500 dilution. Blue: DAPI for nuclear staining.



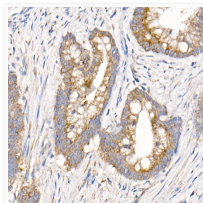
Immunofluorescence analysis of HeLa cells using MMP14/MT1-MMP Rabbit polyclonal antibody (STJ24578) at dilution of 1:100 (40x lens). Secondary antibody: Cy3 Goat Anti-Rabbit IgG (H+L) at 1:500 dilution. Blue: DAPI for nuclear staining.



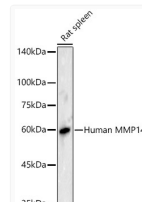
Immunohistochemistry analysis of MMP14/MT1-MMP in paraffin-embedded rat kidney using MMP14/MT1-MMP Rabbit polyclonal antibody (STJ24578) at dilution of 1:200 (40x lens). Perform high pressure antigen retrieval with 10 mM citrate buffer pH 6.0 before commencing with immunohistochemistry staining protocol.



Immunohistochemistry analysis of MMP14/MT1-MMP in paraffin-embedded mouse kidney using MMP14/MT1-MMP Rabbit polyclonal antibody (STJ24578) at dilution of 1:200 (40x lens). Perform high pressure antigen retrieval with 10 mM citrate buffer pH 6.0 before commencing with immunohistochemistry staining protocol.



Immunohistochemistry analysis of MMP14/MT1-MMP in paraffin-embedded human colon carcinoma using MMP14/MT1-MMP Rabbit polyclonal antibody (STJ24578) at dilution of 1:200 (40x lens). Perform high pressure antigen retrieval with 10 mM citrate buffer pH 6.0 before commencing with immunohistochemistry staining protocol.



Western blot analysis of lysates from Rat spleen using MMP14/MT1-MMP Rabbit polyclonal antibody (STJ24578) at 1:500 dilution. Secondary antibody: HRP Goat Anti-Rabbit IgG (H+L) (STJS000856) at 1:10000 dilution. Lysates/proteins: 25 μ g per lane. Blocking buffer: 3% nonfat dry milk in TBST. Detection: ECL Basic Kit. Exposure time: 5s.