

Anti-MEF2C antibody (170-380) (STJ24543)

GENERAL INFORMATION

Product Type	Primary antibodies
Applications	WB/IHC-P/ELISA
Host / Source	Rabbit
Reactivity	Human/Mouse/Rat

PRODUCT PROPERTIES

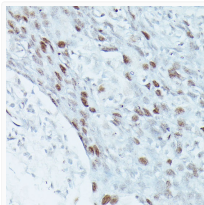
Clonality	Polyclonal
Concentration	Lot specific
Conjugation	Unconjugated
Purification	Affinity purification
Dilution Range	WB:1:500-1:2000 IHC-P:1:50-1:200 ELISA:Recommended starting concentration is 1 Mu g/mL. Please optimize the concentration based on your specific assay requirements.
Formulation	PBS with 0.09% Sodium Azide, 50% Glycerol, pH 7.3.
Isotype	IgG
Molecular Weight	Protein Mw: 51kDa Observed Mw: 55kDa
Storage Instruction	Store at -20°C for up to 1 year from the date of receipt, and avoid repeat freeze-thaw cycles.

TARGET INFORMATION

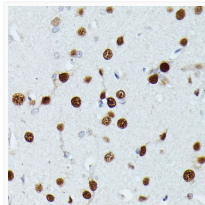
Gene ID	4208
Gene Symbol	MEF2C
UniProt ID	MEF2C_HUMAN
Immunogen Region	170-380
Immunogen Sequence	LPLAHPSLQRNSMSPGVTHR PPSAGNTGGLMGGDLTSGAG TSAGNGYGNPRNSPGLLVSP GNLNKNMQAKSPPMNLGMN NRKPDRLRVLIPPGSKNTMPS VSEDVDLLLNQRINNSQSAQ SLATPVVSVATPTLPGQGMG GYPSAISTTYGTEYSLSSAD LSSLSGFNTASALHLGVSVTG WQQQHLHNMPSPALSQGLGAC TSTHLSQSSNL
Specificity	A synthetic peptide corresponding to a sequence within amino acids 170-380 of human MEF2C (NP_002388.2).

ADDITIONAL INFORMATION

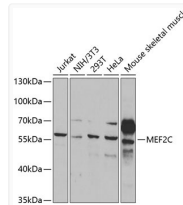
Note **STRICTLY FOR FURTHER SCIENTIFIC RESEARCH USE ONLY (RUO). MUST NOT TO BE USED IN DIAGNOSTIC OR THERAPEUTIC APPLICATIONS.**



Immunohistochemistry analysis of MEF2C in paraffin-embedded human breast cancer using MEF2C Rabbit polyclonal antibody (STJ24543) at dilution of 1:100 (40x lens). Perform microwave antigen retrieval with 10 mM PBS buffer pH 7.2 before commencing with immunohistochemistry staining protocol.



Immunohistochemistry analysis of MEF2C in paraffin-embedded rat brain using MEF2C Rabbit polyclonal antibody (STJ24543) at dilution of 1:100 (40x lens). Perform microwave antigen retrieval with 10 mM PBS buffer pH 7.2 before commencing with immunohistochemistry staining protocol.



Western blot analysis of various lysates using MEF2C Rabbit polyclonal antibody (STJ24543) at 1:1000 dilution. Secondary antibody: HRP Goat Anti-Rabbit IgG (H+L) (STJS000856) at 1:10000 dilution. Lysates/proteins: 25 Mu g per lane. Blocking buffer: 3% nonfat dry milk in TBST.