

Anti-MED1 antibody (1-300) (STJ24540)

GENERAL INFORMATION

Product Type	Primary antibodies
Applications	WB/ELISA
Host / Source	Rabbit
Reactivity	Human

PRODUCT PROPERTIES

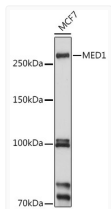
Clonality	Polyclonal
Concentration	Lot specific
Conjugation	Unconjugated
Purification	Affinity purification
Dilution Range	WB:1:500-1:1000 ELISA:Recommended starting concentration is 1 µg/mL. Please optimize the concentration based on your specific assay requirements.
Formulation	PBS with 0.02% Sodium Azide, 50% Glycerol, pH 7.3.
Isotype	IgG
Molecular Weight	Protein Mw: 168kDa Observed Mw: 250kDa
Storage Instruction	Store at -20°C for up to 1 year from the date of receipt, and avoid repeat freeze-thaw cycles.

TARGET INFORMATION

Gene ID	5469
Gene Symbol	MED1
UniProt ID	MED1_HUMAN
Immunogen Region	1-300
Immunogen Sequence	MKAQGETEESEKLSKMSSLL ERLHAKFNQNRPWSETIKLV RQVMEKRVVMSSGGHQHLVS CLETLQKALKVTSLPAMTDR LESIARQNLGSHLSASGTE CYITSDMFYVEVQLDPAGQL CDVKVAHHGENPVSCPELVQ QLREKNFDEFKHLKGLVNL YNLPGDNKLKTKMYLALQSL EQDLSKMAIMYWKATNAGPL DKILHGSVGYLTPRSGGHLN NLKYYVSPDLLDDKTASP
Specificity	Recombinant fusion protein containing a sequence corresponding to amino acids 1-300 of human MED1 (NP_004765.2).

ADDITIONAL INFORMATION

Note STRICTLY FOR FURTHER SCIENTIFIC RESEARCH USE ONLY (RUO). MUST NOT TO BE USED IN DIAGNOSTIC OR THERAPEUTIC APPLICATIONS.



Western blot analysis of extracts of MCF7 cells, using MED1 antibody (STJ24540) at 1:1000 dilution. Secondary antibody: HRP Goat Anti-Rabbit IgG (H+L) (STJS000856) at 1:10000 dilution. Lysates/proteins: 25 µg per lane. Blocking buffer: 3% nonfat dry milk in TBST. Detection: ECL Basic Kit. Exposure time: 10s.