

Anti-MCM3 antibody (1-295) (STJ24524)

GENERAL INFORMATION

Product Type	Primary antibodies
Applications	WB/IP/ELISA
Host / Source	Rabbit
Reactivity	Human/Mouse/Rat

PRODUCT PROPERTIES

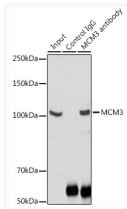
Clonality	Polyclonal
Concentration	Lot specific
Conjugation	Unconjugated
Purification	Affinity purification
Dilution Range	WB:1:500-1:2000 IP:0.5 Mu g-4 Mu g antibody for 200 Mu g-400 Mu g extracts of whole cells ELISA:Recommended starting concentration is 1 Mu g/mL. Please optimize the concentration based on your specific assay requirements.
Formulation	PBS with 0.02% Sodium Azide, 50% Glycerol, pH 7.3.
Isotype	IgG
Molecular Weight	Protein Mw: 91kDa Observed Mw: 105kDa
Storage Instruction	Store at -20°C for up to 1 year from the date of receipt, and avoid repeat freeze-thaw cycles.

TARGET INFORMATION

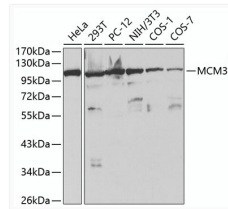
Gene ID	4172
Gene Symbol	MCM3
UniProt ID	MCM3_HUMAN
Immunogen Region	1-295
Immunogen Sequence	MAGTVVLDDVELREAQRDYL DFLDDEEDQGIYQSKVRELI SDNQYRLIVNVNDLRRKNEK RANRLNNAFEELVAFQRAL KDFVASIDATYAKQYEEFYV GLEGSFGSKHVSPRTLTSFCF LSCVVCVEGIVTKCSLVRPK VVRSVHYCPATKKTIERRYS DLTTLVAFPSVVPTKDEE NNPLETEYGLSVYKDHQTIT IQEMPEKAPAGQLPRSDVI LDDDLVDKAKPGDRVQVVG
Specificity	Recombinant fusion protein containing a sequence corresponding to amino acids 1-295 of human MCM3 (NP_002379.2).

ADDITIONAL INFORMATION

Note **STRICTLY FOR FURTHER SCIENTIFIC RESEARCH USE ONLY (RUO). MUST NOT TO BE USED IN DIAGNOSTIC OR THERAPEUTIC APPLICATIONS.**



Immunoprecipitation analysis of 300 Mu g extracts of NIH/3T3 cells using 3 Mu g MCM3 antibody (STJ24524). Western blot was performed from the immunoprecipitate using MCM3 antibody (STJ24524) at a dilution of 1:1000.



Western blot analysis of various lysates using MCM3 Rabbit polyclonal antibody (STJ24524) at 1:1000 dilution. Secondary antibody: HRP Goat Anti-Rabbit IgG (H+L) (STJS000856) at 1:10000 dilution. Lysates/proteins: 25 Mu g per lane. Blocking buffer: 3% nonfat dry milk in TBST.