

Anti-MBP antibody (80-165) (STJ24515)

GENERAL INFORMATION

Product Type	Primary antibodies
Applications	WB/IHC-P/IF/ICC/ELISA
Host / Source	Rabbit
Reactivity	Human/Mouse/Rat

PRODUCT PROPERTIES

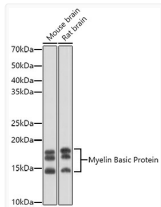
Clonality	Polyclonal
Concentration	Lot specific
Conjugation	Unconjugated
Purification	Affinity purification
Dilution Range	WB:1:500-1:1000 IHC-P:1:50-1:200 IF/ICC:1:50-1:200 ELISA:Recommended starting concentration is 1 μ g/mL. Please optimize the concentration based on your specific assay requirements.
Formulation	PBS with 0.09% Sodium Azide, 50% Glycerol, pH7.3.
Isotype	IgG
Molecular Weight	Protein Mw: 33kDa Observed Mw: 12-18kDa
Storage Instruction	Store at -20°C for up to 1 year from the date of receipt, and avoid repeat freeze-thaw cycles.

TARGET INFORMATION

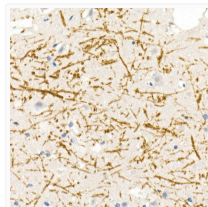
Gene ID	4155
Gene Symbol	MBP
UniProt ID	MBP_HUMAN
Immunogen Region	80-165
Immunogen Sequence	AHPADPGSRPHLIRLFSRDA PGREDNTFKDRPSESEDELQT IQEDSAATSESLDVMASQKR PSQRHGSKYLATASTMDHAR HGFLPR
Specificity	Recombinant fusion protein containing a sequence corresponding to amino acids 80-165 of human Myelin Basic Protein (NP_001020272.1).

ADDITIONAL INFORMATION

Note **STRICTLY FOR FURTHER SCIENTIFIC RESEARCH USE ONLY (RUO). MUST NOT TO BE USED IN DIAGNOSTIC OR THERAPEUTIC APPLICATIONS.**



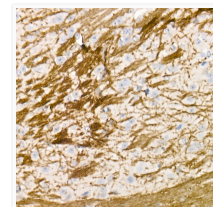
Western blot analysis of extracts of various cell lines, using Myelin Basic Protein antibody (STJ24515) at 1:1000 dilution. Secondary antibody: HRP Goat Anti-rabbit IgG (H+L) (STJS00856) at 1:10000 dilution. Lysates/proteins: 25 μ g per lane. Blocking buffer: 3% non-fat dry milk in TBST. Detection: ECL Basic Kit. Exposure time: 90s.



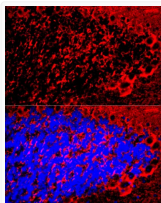
Immunohistochemistry analysis of paraffin-embedded human brain using Myelin Basic Protein rabbit polyclonal antibody (STJ24515) at dilution of 1:20 (40x lens). Perform high pressure antigen retrieval with 10 mM citrate buffer pH 6. 0 before commencing with immunohistochemistry staining protocol.



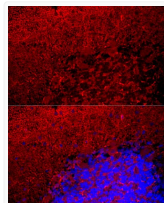
Immunohistochemistry analysis of paraffin-embedded mouse brain using Myelin Basic Protein rabbit polyclonal antibody (STJ24515) at dilution of 1:20 (40x lens). Perform high pressure antigen retrieval with 10 mM citrate buffer pH 6. 0 before commencing with immunohistochemistry staining protocol.



Immunohistochemistry analysis of paraffin-embedded rat brain using Myelin Basic Protein rabbit polyclonal antibody (STJ24515) at dilution of 1:20 (40x lens). Perform high pressure antigen retrieval with 10 mM citrate buffer pH 6. 0 before commencing with immunohistochemistry staining protocol.



Immunofluorescence analysis of mouse brain cells using Myelin Basic Protein rabbit polyclonal antibody (STJ24515) at dilution of 1:50 (40x lens). Blue: DAPI for nuclear staining.



Immunofluorescence analysis of rat brain cells using Myelin Basic Protein rabbit polyclonal antibody (STJ24515) at dilution of 1:50 (40x lens). Blue: DAPI for nuclear staining.