

Anti-MAPRE1 antibody (134-268) (STJ24498)

GENERAL INFORMATION

| | |
|---------------|--------------------|
| Product Type | Primary antibodies |
| Applications | WB/IF/ICC/ELISA |
| Host / Source | Rabbit |
| Reactivity | Human/Mouse/Rat |

PRODUCT PROPERTIES

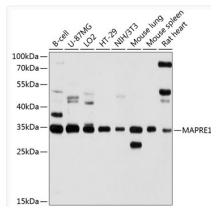
| | |
|---------------------|--|
| Clonality | Polyclonal |
| Concentration | Lot specific |
| Conjugation | Unconjugated |
| Purification | Affinity purification |
| Dilution Range | WB:1:500-1:2000 IF/CC:1:50-1:200 ELISA:Recommended starting concentration is 1 Mu g/mL. Please optimize the concentration based on your specific assay requirements. |
| Formulation | PBS with 0.01% Thimerosal, 50% Glycerol, pH 7.3. |
| Isotype | IgG |
| Molecular Weight | Protein Mw: 30kDa Observed Mw: 34kDa |
| Storage Instruction | Store at -20°C for up to 1 year from the date of receipt, and avoid repeat freeze-thaw cycles. |

TARGET INFORMATION

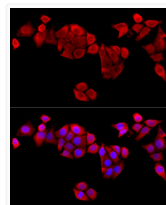
| | |
|--------------------|--|
| Gene ID | 22919 |
| Gene Symbol | MAPRE1 |
| UniProt ID | MARE1_HUMAN |
| Immunogen Region | 134-268 |
| Immunogen Sequence | ETAVAPSLVPALNPKPKPL TSSSAAPQRPISRTQRTAAAP KAGPGVVRKNPGVGNQDDEA AELMQQVNVLLKLTVEDLEKE RDFYFGKLRNIELICQENEG ENDPVLRQIVDILYATDEGF VIPDEGGPQEEQEEY |
| Specificity | Recombinant fusion protein containing a sequence corresponding to amino acids 134-268 of human MAPRE1 (NP_036457.1). |

ADDITIONAL INFORMATION

Note **STRICTLY FOR FURTHER SCIENTIFIC RESEARCH USE ONLY (RUO). MUST NOT TO BE USED IN DIAGNOSTIC OR THERAPEUTIC APPLICATIONS.**



Western blot analysis of extracts of various cell lines, using MAPRE1 antibody (STJ24498) at 1:1000 dilution. Secondary antibody: HRP Goat Anti-rabbit IgG (H+L) (STJS000856) at 1:10000 dilution. Lysates/proteins: 25 Mu g per lane. Blocking buffer: 3% non-fat dry milk in TBST. Detection: ECL Basic Kit. Exposure time: 10s.



Immunofluorescence analysis of HeLa cells using MAPRE1 antibody (STJ24498) at dilution of 1:100 (40x lens). Blue: DAPI for nuclear staining.