

## Anti-MAPK7 antibody (1-815) (STJ24489)

### GENERAL INFORMATION

Product Type	Primary antibodies
Applications	WB/IHC-P/IF/ICC/ELISA
Host / Source	Rabbit
Reactivity	Human/Mouse/Rat

### PRODUCT PROPERTIES

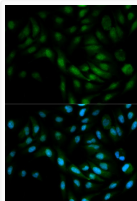
Clonality	Polyclonal
Concentration	Lot specific
Conjugation	Unconjugated
Purification	Affinity purification
Dilution Range	WB:1:100-1:500 IHC-P:1:50-1:200 IF/ICC:1:50-1:200 ELISA:Recommended starting concentration is 1 µg/mL. Please optimize the concentration based on your specific assay requirements.
Formulation	PBS with 0.09% Sodium Azide, 50% Glycerol, pH 7.3.
Isotype	IgG
Molecular Weight	Protein Mw: 88kDa Observed Mw: 115kDa
Storage Instruction	Store at -20°C for up to 1 year from the date of receipt, and avoid repeat freeze-thaw cycles.

### TARGET INFORMATION

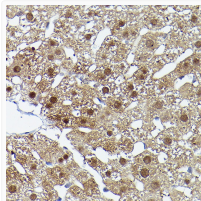
Gene ID	<a href="#">5598</a>
Gene Symbol	<a href="#">MAPK7</a>
UniProt ID	<a href="#">MK07_HUMAN</a>
Immunogen Region	1-815
Immunogen Sequence	MAEPLKEEDGEDGSAEPPGP VKAEPAAHTAASVAAKNLALL KARSFDVTFDVGDEYEIET IGNGAYGVVSSARRRLTGQQ VAIKKIPNAFDVVTNAKRTL RELKILKHFKHDNIIAIKDI LRPTVPYGEFKSVYVLDLM ESDLHQIHSQPLTLEHVR YFLYQLLRGLKYMHSQAQVIH RDLKPSNLLVNECELKIGD FGMARGLCTSPAEHQYFMTE YVATRWRAPELMLSLHEY
Specificity	Recombinant fusion protein containing a sequence corresponding to amino acids 1-310 of human ERK5 (NP_002740.2).

### ADDITIONAL INFORMATION

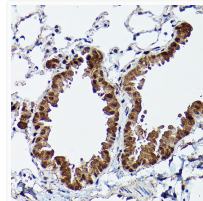
Note STRICTLY FOR FURTHER SCIENTIFIC RESEARCH USE ONLY (RUO). MUST NOT TO BE USED IN DIAGNOSTIC OR THERAPEUTIC APPLICATIONS.



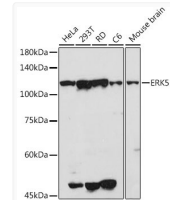
Immunofluorescence analysis of MCF-7 cells using ERK5 antibody (STJ24489). Blue: DAPI for nuclear staining.



Immunohistochemistry analysis of paraffin-embedded rat liver using ERK5 Rabbit polyclonal antibody (STJ24489) at dilution of 1:50 (40x lens). Perform high pressure antigen retrieval with 10 mM citrate buffer pH 6.0 before commencing with immunohistochemistry staining protocol.



Immunohistochemistry analysis of paraffin-embedded mouse lung using ERK5 Rabbit polyclonal antibody (STJ24489) at dilution of 1:50 (40x lens). Perform high pressure antigen retrieval with 10 mM citrate buffer pH 6.0 before commencing with immunohistochemistry staining protocol.



Western blot analysis of extracts of various cell lines, using ERK5 antibody (STJ24489) at 1:500 dilution. Secondary antibody: HRP Goat Anti-Rabbit IgG (H+L) (STJS000856) at 1:10000 dilution. Lysates/proteins: 25 µg per lane. Blocking buffer: 3% nonfat dry milk in TBST. Detection: ECL Basic Kit. Exposure time: 90s.