

## Anti-MAOA antibody (1-260) (STJ24453)

### GENERAL INFORMATION

Product Type	Primary antibodies
Applications	WB/IHC-P/IF/ICC/ELISA
Host / Source	Rabbit
Reactivity	Human/Mouse/Rat

### PRODUCT PROPERTIES

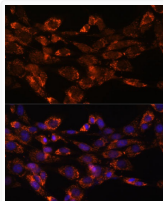
Clonality	Polyclonal
Concentration	Lot specific
Conjugation	Unconjugated
Purification	Affinity purification
Dilution Range	WB:1:500-1:2000 IHC-P:1:50-1:200 IF/ICC:1:50-1:200 ELISA:Recommended starting concentration is 1 $\mu$ g/mL. Please optimize the concentration based on your specific assay requirements.
Formulation	PBS with 0.09% Sodium Azide, 50% Glycerol, pH7.3.
Isotype	IgG
Molecular Weight	Protein Mw: 61kDa Observed Mw: 65kDa
Storage Instruction	Store at -20°C for up to 1 year from the date of receipt, and avoid repeat freeze-thaw cycles.

### TARGET INFORMATION

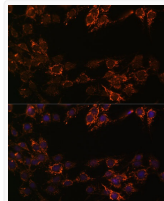
Gene ID	<a href="#">4128</a>
Gene Symbol	<a href="#">MAOA</a>
UniProt ID	<a href="#">AOFA_HUMAN</a>
Immunogen Region	1-260
Immunogen Sequence	MENQEKASIAGHMFDDVVVIG GGISGLSAAKLLTEYGVSVL VLEARDRVGGRTYIRNEHV DYVDVGGAYVGPQTQNRILRL SKELGIETYKVNVSERLVQY VKGKTYPPFRGAFPPWNP YLDYNNLWRTIDNMGKEIPT DAPWEAQHADKWDKMTMKEL IDKICWTKTARRFAYLFVNI NVTSEPHVESALWFLWYVKQ CGGTTTRIFSVTNGGQERKFV GGSGQVSERIMDLLGDQVK
Specificity	Recombinant fusion protein containing a sequence corresponding to amino acids 1-260 of human Monoamine Oxidase A (Monoamine Oxidase A (MAOA) ) (NP_000231.1).

### ADDITIONAL INFORMATION

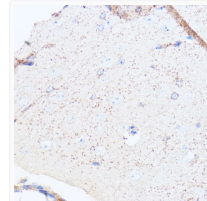
Note	STRICTLY FOR FURTHER SCIENTIFIC RESEARCH USE ONLY (RUO). MUST NOT TO BE USED IN DIAGNOSTIC OR THERAPEUTIC APPLICATIONS.
------	---



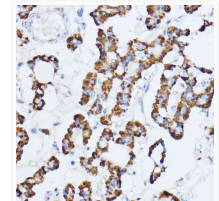
Immunofluorescence analysis of NIH/3T3 cells using Monoamine Oxidase A (Monoamine Oxidase A (MAOA) ) antibody (STJ24453) at dilution of 1:100. Blue: DAPI for nuclear staining.



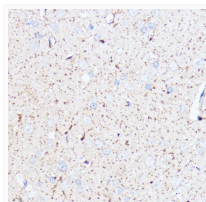
Immunofluorescence analysis of C6 cells using Monoamine Oxidase A (Monoamine Oxidase A (MAOA) ) antibody (STJ24453) at dilution of 1:100. Blue: DAPI for nuclear staining.



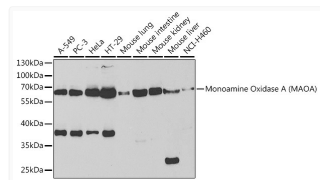
Immunohistochemistry analysis of paraffin-embedded mouse brain using Monoamine Oxidase A (Monoamine Oxidase A (MAOA) ) antibody (STJ24453) at dilution of 1:100 (40x lens). Perform microwave antigen retrieval with 10 mM PBS buffer pH 7. 2 before commencing with immunohistochemistry staining protocol.



Immunohistochemistry analysis of paraffin-embedded human thyroid cancer using Monoamine Oxidase A (Monoamine Oxidase A (MAOA) ) antibody (STJ24453) at dilution of 1:100 (40x lens). Perform microwave antigen retrieval with 10 mM PBS buffer pH 7. 2 before commencing with immunohistochemistry staining protocol.



Immunohistochemistry analysis of paraffin-embedded rat brain using Monoamine Oxidase A (Monoamine Oxidase A (MAOA) ) antibody (STJ24453) at dilution of 1:100 (40x lens). Perform microwave antigen retrieval with 10 mM PBS buffer pH 7. 2 before commencing with immunohistochemistry staining protocol.



Western blot analysis of extracts of various cell lines, using Monoamine Oxidase A (Monoamine Oxidase A (MAOA) ) antibody (STJ24453) at 1:1000 dilution. Secondary antibody: HRP Goat Anti-Rabbit IgG (H+L) (STJS000856) at 1:10000 dilution. Lysates/proteins: 25  $\mu$ g per lane. Blocking buffer: 3% nonfat dry milk in TBST.