

Anti-LYPLA1 antibody (1-230) (STJ24436)

GENERAL INFORMATION

Product Type	Primary antibodies
Applications	WB/IHC-P/ELISA
Host / Source	Rabbit
Reactivity	Human/Mouse

PRODUCT PROPERTIES

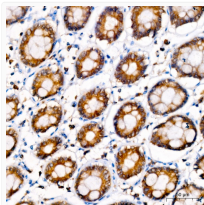
Clonality	Polyclonal
Concentration	Lot specific
Conjugation	Unconjugated
Purification	Affinity purification
Dilution Range	WB:1:500-1:2000 IHC-P:1:50-1:200 ELISA:Recommended starting concentration is 1 Mu g/mL. Please optimize the concentration based on your specific assay requirements.
Formulation	PBS with 0.05% Proclin300, 50% Glycerol, pH 7.3.
Isotype	IgG
Molecular Weight	Protein Mw: 25kDa Observed Mw: 25kDa
Storage Instruction	Store at -20°C for up to 1 year from the date of receipt, and avoid repeat freeze-thaw cycles.

TARGET INFORMATION

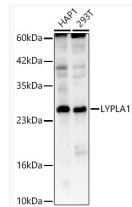
Gene ID	10434
Gene Symbol	LYPLA1
UniProt ID	LYPA1_HUMAN
Immunogen Region	1-230
Immunogen Sequence	MCGNNMSTPLPAIVPAARKA TAAVIFLHGLGDTGHGWAEA FAGIRSSHICYICPHAPVRP VTLNMMNVAMPWFDIIGLSP DSQEDESIGIKQAAENIKALI DQEVKNGIPSNRIILGGFSQ GGALSPLYALTQQKLAGVT ALSCWLP LRSFPQGP IGGANRDISILQCHGDCDPLVPLM FGSLTVEKLT L VNPANVTF KTYEGMMHSSCQEMMDVKQ FIDKLLPPID
Specificity	Recombinant fusion protein containing a sequence corresponding to amino acids 1-230 of human LYPLA1 (NP_006321.1).

ADDITIONAL INFORMATION

Note **STRICTLY FOR FURTHER SCIENTIFIC RESEARCH USE ONLY (RUO). MUST NOT TO BE USED IN DIAGNOSTIC OR THERAPEUTIC APPLICATIONS.**



Immunohistochemistry analysis of LYPLA1 in paraffin-embedded human colon tissue using LYPLA1 Rabbit polyclonal antibody (STJ24436) at a dilution of 1:100 (40x lens). High pressure antigen retrieval was performed with 0.01 M citrate buffer (pH 6.0) prior to immunohistochemistry staining.



Western blot analysis of various lysates using LYPLA1 Rabbit polyclonal antibody (STJ24436) at 1:1000 dilution. Secondary antibody: HRP Goat Anti-Rabbit IgG (H+L) (STJS000856) at 1:10000 dilution. Lysates/ proteins: 25 Mu g per lane. Blocking buffer: 3 % nonfat dry milk in TBST. Detection: ECL Basic Kit. Exposure time: 90s.