

Anti-LCN2 antibody (34-50) (STJ24382)

GENERAL INFORMATION

Product Type	Primary antibodies
Applications	WB/ELISA
Host / Source	Rabbit
Reactivity	Human/Mouse/Rat

PRODUCT PROPERTIES

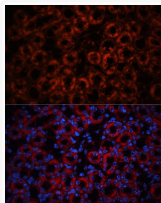
Clonality	Polyclonal
Concentration	Lot specific
Conjugation	Unconjugated
Purification	Affinity purification
Dilution Range	WB:1:500-1:1000 ELISA:Recommended starting concentration is 1 Mu g/mL. Please optimize the concentration based on your specific assay requirements.
Formulation	PBS with 0.09% Sodium Azide, 50% Glycerol, pH 7.3.
Isotype	IgG
Molecular Weight	Protein Mw: 23kDa Observed Mw: 22kDa
Storage Instruction	Store at -20°C for up to 1 year from the date of receipt, and avoid repeat freeze-thaw cycles.

TARGET INFORMATION

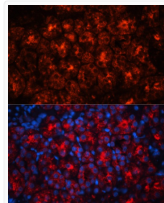
Gene ID	3934
Gene Symbol	LCN2
UniProt ID	NGAL_HUMAN
Immunogen Region	34-50
Immunogen Sequence	MPLGLLWLGALLGALHAQA QDSTSDLIPAPPLSKVPLQQ NFDNQFQGGKQWYVVLGAGNA ILREDKDPQKMYATIYELKE DKSYNVTSVLFRRKKKCDYWI
Specificity	A synthetic peptide corresponding to a sequence within amino acids 1-100 of human Lipocalin-2/NGAL (NP_005555.2).

ADDITIONAL INFORMATION

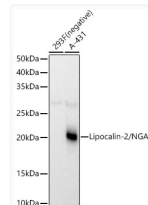
Note **STRICTLY FOR FURTHER SCIENTIFIC RESEARCH USE ONLY (RUO). MUST NOT TO BE USED IN DIAGNOSTIC OR THERAPEUTIC APPLICATIONS.**



Immunofluorescence analysis of mouse kidney using Lipocalin-2/NGAL antibody (STJ24382) at dilution of 1:100. Blue: DAPI for nuclear staining.



Immunofluorescence analysis of rat kidney using Lipocalin-2/NGAL antibody (STJ24382) at dilution of 1:100. Blue: DAPI for nuclear staining.



Western blot analysis of extracts of various cell lines, using Lipocalin-2/NGAL antibody (STJ24382) at 1:1000 dilution. Secondary antibody: HRP Goat Anti-Rabbit IgG (H+L) (STJS000856) at 1:10000 dilution. Lysates/proteins: 25 Mu g per lane. Blocking buffer: 3% nonfat dry milk in TBST. Detection: ECL Basic Kit. Exposure time: 1s.