

Anti-LAMP2 antibody (29-410) (STJ24369)

GENERAL INFORMATION

Product Type	Primary antibodies
Applications	WB/IHC-P/IF/ICC/ELISA
Host / Source	Rabbit
Reactivity	Human/Mouse

PRODUCT PROPERTIES

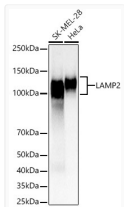
Clonality	Polyclonal
Concentration	Lot specific
Conjugation	Unconjugated
Purification	Affinity purification
Dilution Range	WB:1:1000-1:5000 IHC-P:1:100-1:500 IF/ICC:1:100-1:500 ELISA:Recommended starting concentration is 1 Mu g/mL. Please optimize the concentration based on your specific assay requirements.
Formulation	PBS with 0.02% Sodium Azide, 50% Glycerol, pH 7.3.
Isotype	IgG
Molecular Weight	Protein Mw: 45kDa Observed Mw: 100-130kDa
Storage Instruction	Store at -20°C for up to 1 year from the date of receipt, and avoid repeat freeze-thaw cycles.

TARGET INFORMATION

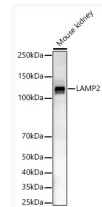
Gene ID	3920
Gene Symbol	LAMP2
UniProt ID	LAMP2_HUMAN
Immunogen Region	29-410
Immunogen Sequence	LELNLTDSENATCLYAKWQM NFTVRYETTNKYKTVTISD HGTVTYNGSICGDDQNGPKI AVQFGPGFSWIANFTKAAST YSIDSVSFSYNTGDNTTFPD AEDKGILTVDLLAIRIPLN DLFRCNSLSTLEKNDVVQHY WDVLVQAFVQNGTVSTNEFL CDKDKTSTVAPTIIHTTVSP TTTPTPKKEPEAGTYSVNNNG NDTCLLATMGLQLNITQDKV ASVININPNTTHTSTGSCR
Specificity	Recombinant fusion protein containing a sequence corresponding to amino acids 29-375 of human LAMP2 (NP_002285.1).

ADDITIONAL INFORMATION

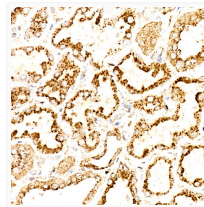
Note STRICTLY FOR FURTHER SCIENTIFIC RESEARCH USE ONLY (RUO). MUST NOT TO BE USED IN DIAGNOSTIC OR THERAPEUTIC APPLICATIONS.



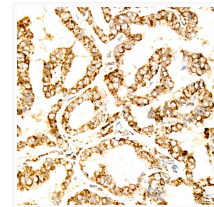
Western blot analysis of various lysates, using LAMP2 antibody (STJ24369) at 1:2000 dilution. Secondary antibody: HRP Goat Anti-rabbit IgG (H+L) (STJS000856) at 1:10000 dilution. Lysates/proteins: 25 Mu g per lane. Blocking buffer: 3% non-fat dry milk in TBST. Detection: ECL Basic Kit. Exposure time: 3s.



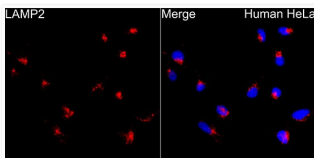
Western blot analysis of mouse kidney, using LAMP2 antibody (STJ24369) at 1:2000 dilution. Secondary antibody: HRP Goat Anti-rabbit IgG (H+L) (STJS000856) at 1:10000 dilution. Lysates/proteins: 25 Mu g per lane. Blocking buffer: 3% non-fat dry milk in TBST. Detection: ECL Basic Kit. Exposure time: 180s.



Immunohistochemistry analysis of paraffin-embedded human kidney using LAMP2 rabbit polyclonal antibody (STJ24369) at dilution of 1:300 (40x lens). Perform high pressure antigen retrieval with 10 mM citrate buffer pH 6.0 before commencing with immunohistochemistry staining protocol.



Immunohistochemistry analysis of paraffin-embedded human thyroid cancer using LAMP2 rabbit polyclonal antibody (STJ24369) at dilution of 1:300 (40x lens). Perform high pressure antigen retrieval with 10 mM citrate buffer pH 6.0 before commencing with immunohistochemistry staining protocol.



Immunofluorescence analysis of HeLa cells using LAMP2 rabbit polyclonal antibody (STJ24369) at dilution of 1:300 (40x lens). Blue: DAPI for nuclear staining.