

Anti-KRT5 antibody (1-100) (STJ24360)

GENERAL INFORMATION

Product Type	Primary antibodies
Applications	WB/IHC-P/IF/ICC/IP/ELISA
Host / Source	Rabbit
Reactivity	Human/Mouse

PRODUCT PROPERTIES

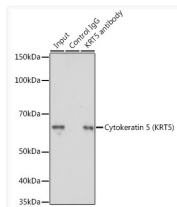
Clonality	Polyclonal
Concentration	Lot specific
Conjugation	Unconjugated
Purification	Affinity purification
Dilution Range	WB:1:500-1:1000 IHC-P:1:50-1:200 IF/CC:1:50-1:200 IP:0.5 Mu g-4 Mu g antibody for 200 Mu g-400 Mu g extracts of whole cells ELISA:Recommended starting concentration is 1 Mu g/mL. Please optimize the concentration based on your specif
Formulation	PBS with 0.09% Sodium Azide, 50% Glycerol, pH 7.3.
Isotype	IgG
Molecular Weight	Protein Mw: 62kDa Observed Mw: 62kDa
Storage Instruction	Store at-20°C for up to 1 year from the date of receipt, and avoid repeat freeze-thaw cycles.

TARGET INFORMATION

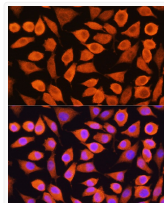
Gene ID	3852
Gene Symbol	KRT5
UniProt ID	K2C5_HUMAN
Immunogen Region	1-100
Immunogen Sequence	MSRQSSVSFRSGGSRSFSTA SAITPSVSRSTSFTSVSRSGG GGGGGFGRVSLAGACGVGGY GSRSLYNLGGSKRISISTSG GSFRNRFAGAGGGYGFGGG
Specificity	A synthetic peptide corresponding to a sequence within amino acids 1-100 of human Cytokeratin 5 (KRT5) (NP_000415.2).

ADDITIONAL INFORMATION

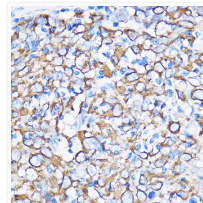
Note **STRICTLY FOR FURTHER SCIENTIFIC RESEARCH USE ONLY (RUO). MUST NOT TO BE USED IN DIAGNOSTIC OR THERAPEUTIC APPLICATIONS.**



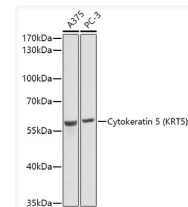
Immunoprecipitation analysis of 200 Mu g extracts of A-431 cells using 3 Mu g Cytokeratin 5 (Cytokeratin 5 (KRT5)) antibody (STJ24360). Western blot was performed from the immunoprecipitate using Cytokeratin 5 (Cytokeratin 5 (KRT5)) antibody (STJ24360) at a dilution of 1:5000.



Immunofluorescence analysis of L929 cells using Cytokeratin 5 (Cytokeratin 5 (KRT5)) Rabbit polyclonal antibody (STJ24360) at dilution of 1:100. Secondary antibody: Cy3 Goat Anti-Rabbit IgG (H+L) at 1:500 dilution. Blue: DAPI for nuclear staining.



Immunohistochemistry analysis of Cytokeratin 5 (KRT5) in paraffin-embedded Human esophageal cancer using Cytokeratin 5 (Cytokeratin 5 (KRT5)) Rabbit polyclonal antibody (STJ24360) at dilution of 1:100 (40x lens). Perform microwave antigen retrieval with 10 mM PBS buffer pH 7. 2 before commencing with immunohistochemistry staining protocol.



Western blot analysis of various lysates using Cytokeratin 5 (KRT5) Rabbit polyclonal antibody (STJ24360) at 1:1000 dilution. Secondary antibody: HRP Goat Anti-Rabbit IgG (H+L) (STJS000856) at 1:10000 dilution. Lysates/proteins: 25 Mu g per lane. Blocking buffer: 3% nonfat dry milk in TBST. Detection: ECL Basic Kit. Exposure time: 1s.