

Anti-KRT19 antibody (210-400) (STJ24355)

GENERAL INFORMATION

Product Type	Primary antibodies
Applications	WB/IHC-P/IF/ICC/ELISA
Host / Source	Rabbit
Reactivity	Human/Mouse/Rat

PRODUCT PROPERTIES

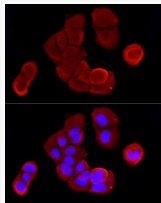
Clonality	Polyclonal
Concentration	Lot specific
Conjugation	Unconjugated
Purification	Affinity purification
Dilution Range	WB:1:100-1:500 IHC-P:1:50-1:200 IF/ICC:1:50-1:200 ELISA:Recommended starting concentration is 1 μ g/mL. Please optimize the concentration based on your specific assay requirements.
Formulation	PBS with 0.09% Sodium Azide, 50% Glycerol, pH7.3.
Isotype	IgG
Molecular Weight	Protein Mw: 44kDa Observed Mw: 40kDa
Storage Instruction	Store at -20°C for up to 1 year from the date of receipt, and avoid repeat freeze-thaw cycles.

TARGET INFORMATION

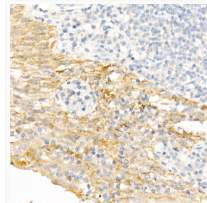
Gene ID	3880
Gene Symbol	KRT19
UniProt ID	K1C19_HUMAN
Immunogen Region	210-400
Immunogen Sequence	ELAYLKKNHEEEISTLRGQV GGVQSVVEVDSAPGTDLAKIL SDMRSQYEVMAEQNRKDAEA WFTSRTEELNREAVAGHTEQL QMSRSEVTLRRTLQGLEIE LQSQLSMKAALEDTLAETEA RFGAQLAHIQ
Specificity	Recombinant fusion protein containing a sequence corresponding to amino acids 210-340 of human Cytokeratin 19 (KRT19) (NP_002267.2).

ADDITIONAL INFORMATION

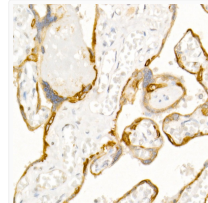
Note **STRICTLY FOR FURTHER SCIENTIFIC RESEARCH USE ONLY (RUO). MUST NOT TO BE USED IN DIAGNOSTIC OR THERAPEUTIC APPLICATIONS.**



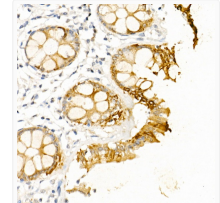
Immunofluorescence analysis of MCF7 cells using Cytokeratin 19 (KRT19) Rabbit polyclonal antibody (STJ24355) at dilution of 1:100 (40x lens). Secondary antibody: Cy3 Goat Anti-Rabbit IgG (H+L) at 1:500 dilution. Blue: DAPI for nuclear staining.



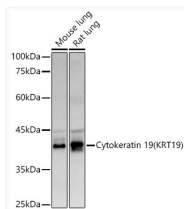
Immunohistochemistry analysis of Cytokeratin 19 (KRT19) in paraffin-embedded human tonsil using Cytokeratin 19 (KRT19) Rabbit polyclonal antibody (STJ24355) at dilution of 1:50 (40x lens). Perform high pressure antigen retrieval with 10 mM citrate buffer pH 6.0 before commencing with immunohistochemistry staining protocol.



Immunohistochemistry analysis of Cytokeratin 19 (KRT19) in paraffin-embedded human placenta using Cytokeratin 19 (KRT19) Rabbit polyclonal antibody (STJ24355) at dilution of 1:50 (40x lens). Perform high pressure antigen retrieval with 10 mM citrate buffer pH 6.0 before commencing with immunohistochemistry staining protocol.



Immunohistochemistry analysis of Cytokeratin 19 (KRT19) in paraffin-embedded human colon using Cytokeratin 19 (KRT19) Rabbit polyclonal antibody (STJ24355) at dilution of 1:50 (40x lens). Perform high pressure antigen retrieval with 10 mM citrate buffer pH 6.0 before commencing with immunohistochemistry staining protocol.



Western blot analysis of various lysates using Cytokeratin 19 (KRT19) Rabbit polyclonal antibody (STJ24355) at 1:500 dilution. Secondary antibody: HRP Goat Anti-Rabbit IgG (H+L) (STJS000856) at 1:10000 dilution. Lysates/proteins: 25 μ g per lane. Blocking buffer: 3% nonfat dry milk in TBST. Detection: ECL Basic Kit. Exposure time: 90s.