

Anti-KPNA4 antibody (1-240) (STJ24342)

GENERAL INFORMATION

Product Type	Primary antibodies
Applications	WB/IHC-P/IF/ICC/ELISA
Host / Source	Rabbit
Reactivity	Human/Mouse/Rat

PRODUCT PROPERTIES

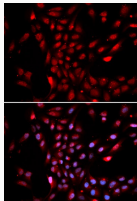
Clonality	Polyclonal
Concentration	Lot specific
Conjugation	Unconjugated
Purification	Affinity purification
Dilution Range	WB:1:100-1:500 IHC-P:1:50-1:200 IF/CC:1:50-1:200 ELISA:Recommended starting concentration is 1 Mu g/mL. Please optimize the concentration based on your specific assay requirements.
Formulation	PBS with 0.02% Sodium Azide, 50% Glycerol, pH 7.3.
Isotype	IgG
Molecular Weight	Protein Mw: 58kDa Observed Mw: 58kDa
Storage Instruction	Store at -20°C for up to 1 year from the date of receipt, and avoid repeat freeze-thaw cycles.

TARGET INFORMATION

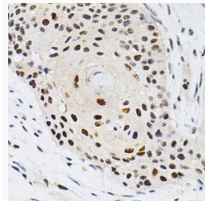
Gene ID	3840
Gene Symbol	KPNA4
UniProt ID	IMA3_HUMAN
Immunogen Region	1-240
Immunogen Sequence	MADNEKLDNQRLKNFKNKGR DLETMRRQRNEVVVELRKNK RDEHLLKRRNVPHEDICEDS DIDGDYRVQNTSLEAIVQNA SSDNQGILSAVQAARKLLS SDRNPPIDDLIKSGILPILV HCLERDDNPSLQFEAAWALT NIASGTSEQTQAVVQSNVAVP LFLRLLHSPHQNVCEQAWWA LGNIIIGDGPQCRDYVISLGV VKPLLSFISPSIPITFLRNV TWVMVNLCRHKDPPPPMET
Specificity	Recombinant fusion protein containing a sequence corresponding to amino acids 1-240 of human KPNA4 (NP_002259.1).

ADDITIONAL INFORMATION

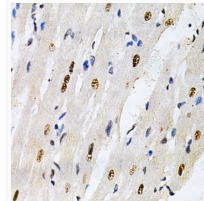
Note STRICTLY FOR FURTHER SCIENTIFIC RESEARCH USE ONLY (RUO). MUST NOT TO BE USED IN DIAGNOSTIC OR THERAPEUTIC APPLICATIONS.



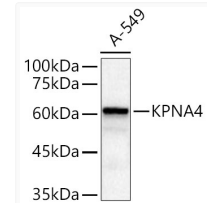
Immunofluorescence analysis of U2OS cells using KPNA4 antibody (STJ24342). Blue: DAPI for nuclear staining.



Immunohistochemistry analysis of paraffin-embedded human esophageal cancer using KPNA4 Antibody (STJ24342) at dilution of 1:200 (40x lens). Perform microwave antigen retrieval with 10 mM PBS buffer pH 7. 2 before commencing with immunohistochemistry staining protocol.



Immunohistochemistry analysis of paraffin-embedded rat heart using KPNA4 Antibody (STJ24342) at dilution of 1:200 (40x lens). Perform microwave antigen retrieval with 10 mM PBS buffer pH 7. 2 before commencing with immunohistochemistry staining protocol.



Western blot analysis of A-549, using KPNA4 Rabbit polyclonal antibody (STJ24342) at 1:400 dilution. Secondary antibody: HRP Goat Anti-Rabbit IgG (H+L) (STJS000856) at 1:10000 dilution. Lysates/proteins: 25 Mu g per lane. Blocking buffer: 3% nonfat dry milk in TBST. Detection: ECL Basic Kit. Exposure time: 180s.