

Anti-KLRC1 antibody (96-215) (STJ24337)

GENERAL INFORMATION

Product Type	Primary antibodies
Applications	WB/ELISA
Host / Source	Rabbit
Reactivity	Mouse

PRODUCT PROPERTIES

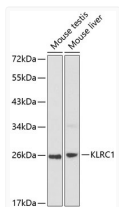
Clonality	Polyclonal
Concentration	Lot specific
Conjugation	Unconjugated
Purification	Affinity purification
Dilution Range	WB:1:500-1:2000 ELISA:Recommended starting concentration is 1 µg/mL. Please optimize the concentration based on your specific assay requirements.
Formulation	PBS with 0.02% Sodium Azide, 50% Glycerol, pH 7.3.
Isotype	IgG
Molecular Weight	Protein Mw: 26kDa Observed Mw: 26kDa
Storage Instruction	Store at -20°C for up to 1 year from the date of receipt, and avoid repeat freeze-thaw cycles.

TARGET INFORMATION

Gene ID	3821
Gene Symbol	KLRC1
UniProt ID	NKG2A_HUMAN
Immunogen Region	96-215
Immunogen Sequence	RHCGHCPEEWITYNSCYI GKERRTWEESLLACTSKNSS LLSIDNEEEMKFLSIISPSS WIGVFRNSSHHPWVTMNGLA FKHEIKSDNAELNCAVLQV NRLKSAQCGSSIIYHCKHKL
Specificity	Recombinant fusion protein containing a sequence corresponding to amino acids 96-215 of human KLRC1 (NP_015567.1).

ADDITIONAL INFORMATION

Note STRICTLY FOR FURTHER SCIENTIFIC RESEARCH USE ONLY (RUO). MUST NOT TO BE USED IN DIAGNOSTIC OR THERAPEUTIC APPLICATIONS.



Western blot analysis of extracts of various cell lines, using KLRC1 antibody (STJ24337) at 1:1000 dilution. Secondary antibody: HRP Goat Anti-Rabbit IgG (H+L) (STJS000856) at 1:10000 dilution. Lysates/proteins: 25 µg per lane. Blocking buffer: 3% nonfat dry milk in TBST. Detection: ECL Enhanced Kit. Exposure time: 5min.