

Anti-KLK1 antibody (25-262) (STJ24329)

GENERAL INFORMATION

Product Type	Primary antibodies
Applications	WB/IHC-P/ELISA
Host / Source	Rabbit
Reactivity	Human/Mouse/Rat

PRODUCT PROPERTIES

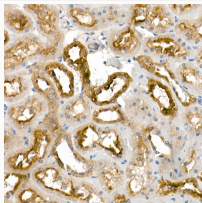
Clonality	Polyclonal
Concentration	Lot specific
Conjugation	Unconjugated
Purification	Affinity purification
Dilution Range	WB:1:500-1:2000 IHC-P:1:100-1:500 ELISA:Recommended starting concentration is 1 µg/mL. Please optimize the concentration based on your specific assay requirements.
Formulation	PBS with 0.02% Sodium Azide, 50% Glycerol, pH 7.3.
Isotype	IgG
Molecular Weight	Protein Mw: 29kDa Observed Mw: 22kDa
Storage Instruction	Store at -20°C for up to 1 year from the date of receipt, and avoid repeat freeze-thaw cycles.

TARGET INFORMATION

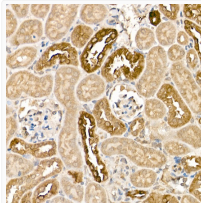
Gene ID	3816
Gene Symbol	KLK1
UniProt ID	KLK1_HUMAN
Immunogen Region	25-262
Immunogen Sequence	IVGGWECEQHSQPWQAALYH FSTFQC GGILVHRQWVLTAA HCISDNYQLWLRHNLFDDE NTAQFVHVSESFPHPGFNMS LLENHTRQADEDYSHDLMLL RLTEPADTITDAVKVVELPT EEPEVGGSTCLASGWSIEPE NFSFPDDLQCVDL KILPNDE CKKAHVQKVTDFMLCVGHLE GGKDTCVGDSGGPLMCDGVL QGVTSWGYVPCGTPNKPSVA VRVLSYVKWIEDTIAENS
Specificity	Recombinant fusion protein containing a sequence corresponding to amino acids 25-262 of human KLK1 (NP_002248.1).

ADDITIONAL INFORMATION

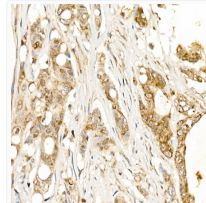
Note **STRICTLY FOR FURTHER SCIENTIFIC RESEARCH USE ONLY (RUO). MUST NOT TO BE USED IN DIAGNOSTIC OR THERAPEUTIC APPLICATIONS.**



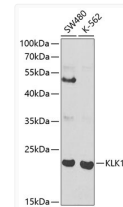
Immunohistochemistry analysis of paraffin-embedded rat kidney using KLK1 Rabbit polyclonal antibody (STJ24329) at dilution of 1:500 (40x lens). Perform high pressure antigen retrieval with 10 mM citrate buffer pH 6.0 before commencing with immunohistochemistry staining protocol.



Immunohistochemistry analysis of paraffin-embedded mouse kidney using KLK1 Rabbit polyclonal antibody (STJ24329) at dilution of 1:500 (40x lens). Perform high pressure antigen retrieval with 10 mM citrate buffer pH 6.0 before commencing with immunohistochemistry staining protocol.



Immunohistochemistry analysis of paraffin-embedded human colon carcinoma using KLK1 Rabbit polyclonal antibody (STJ24329) at dilution of 1:500 (40x lens). Perform high pressure antigen retrieval with 10 mM citrate buffer pH 6.0 before commencing with immunohistochemistry staining protocol.



Western blot analysis of extracts of various cell lines, using KLK1 antibody (STJ24329) at 1:1000 dilution. Secondary antibody: HRP Goat Anti-Rabbit IgG (H+L) (STJS000856) at 1:10000 dilution. Lysates/proteins: 25 µg per lane. Blocking buffer: 3% nonfat dry milk in TBST.