

Anti-KISS1R antibody (179-398) (STJ24319)

GENERAL INFORMATION

| | |
|---------------|-----------------------|
| Product Type | Primary antibodies |
| Applications | WB/IHC-P/IF/ICC/ELISA |
| Host / Source | Rabbit |
| Reactivity | Human/Mouse/Rat |

PRODUCT PROPERTIES

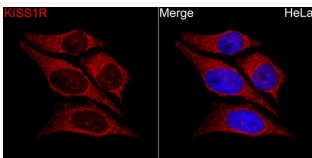
| | |
|---------------------|---|
| Clonality | Polyclonal |
| Concentration | Lot specific |
| Conjugation | Unconjugated |
| Purification | Affinity purification |
| Dilution Range | WB:1:500-1:1000 IHC-P:1:50-1:100 IF/ICC:1:50-1:200 ELISA:Recommended starting concentration is 1 Mu g/mL. Please optimize the concentration based on your specific assay requirements. |
| Formulation | PBS with 0.05% Proclin300, 50% Glycerol, pH7.3. |
| Isotype | IgG |
| Molecular Weight | Protein Mw: 43kDa Observed Mw: |
| Storage Instruction | Store at -20°C for up to 1 year from the date of receipt, and avoid repeat freeze-thaw cycles. |

TARGET INFORMATION

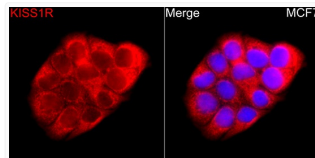
| | |
|--------------------|--|
| Gene ID | 84634 |
| Gene Symbol | KISS1R |
| UniProt ID | KISSR_HUMAN |
| Immunogen Region | 179-398 |
| Immunogen Sequence | ALLYPLPGWVLGDFMCKFVN YIQQVSVQATCATLTAMSVD RWYVTVFPLRALHRRTPRLA LAVLSIWVGSAAVSAPVLA LHRLSPGPRAYCSEAFPSRA LERAFALYNLLALYLLPLLA TCACYAAMLRHLGRVAVRPA PADSALQGQVLAERAGAVRA KVSRLVAAVLLFAACWGPI QLFLVLQALGPAGSWHPRSY |
| Specificity | A synthetic peptide corresponding to a sequence within amino acids 100-200 of human KISS1R (NP_115940.2). |

ADDITIONAL INFORMATION

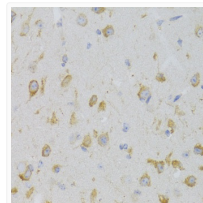
Note STRICTLY FOR FURTHER SCIENTIFIC RESEARCH USE ONLY (RUO). MUST NOT TO BE USED IN DIAGNOSTIC OR THERAPEUTIC APPLICATIONS.



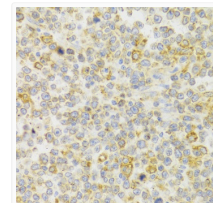
Immunofluorescence analysis of HeLa cells using KISS1R Rabbit polyclonal antibody (STJ24319) at a dilution of 1:150 (40x lens). Secondary antibody: Cy3 Goat Anti-Rabbit IgG (H+L) at 1:500 dilution. Blue: DAPI for nuclear staining.



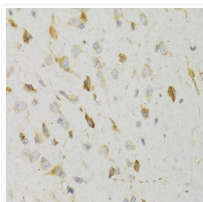
Immunofluorescence analysis of MCF7 cells using KISS1R Rabbit polyclonal antibody (STJ24319) at a dilution of 1:150 (40x lens). Secondary antibody: Cy3 Goat Anti-Rabbit IgG (H+L) at 1:500 dilution. Blue: DAPI for nuclear staining.



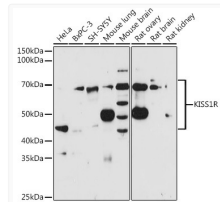
Immunohistochemistry analysis of KISS1R in paraffin-embedded mouse brain using KISS1R Rabbit polyclonal antibody (STJ24319) at dilution of 1:100 (40x lens). Perform microwave antigen retrieval with 10 mM PBS buffer pH 7.2 before commencing with immunohistochemistry staining protocol.



Immunohistochemistry analysis of KISS1R in paraffin-embedded human B cell lymphoma using KISS1R Rabbit polyclonal antibody (STJ24319) at dilution of 1:100 (40x lens). Perform microwave antigen retrieval with 10 mM PBS buffer pH 7.2 before commencing with immunohistochemistry staining protocol.



Immunohistochemistry analysis of KISS1R in paraffin-embedded rat brain using KISS1R Rabbit polyclonal antibody (STJ24319) at dilution of 1:100 (40x lens). Perform microwave antigen retrieval with 10 mM PBS buffer pH 7.2 before commencing with immunohistochemistry staining protocol.



Western blot analysis of various lysates using KISS1R Rabbit polyclonal antibody (STJ24319) at 1:1000 dilution. Secondary antibody: HRP Goat Anti-Rabbit IgG (H+L) (STJS000856) at 1:10000 dilution. Lysates/proteins: 25 Mu g per lane. Blocking buffer: 3% nonfat dry milk in TBST. Detection: ECL Basic Kit. Exposure time: 60s.