

Anti-ITGB4 antibody (611-710) (STJ24260)

GENERAL INFORMATION

Product Type	Primary antibodies
Applications	WB/ELISA
Host / Source	Rabbit
Reactivity	Human/Mouse/Rat

PRODUCT PROPERTIES

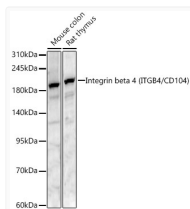
Clonality	Polyclonal
Concentration	Lot specific
Conjugation	Unconjugated
Purification	Affinity purification
Dilution Range	WB:1:500-1:2000 ELISA:Recommended starting concentration is 1 µg/mL. Please optimize the concentration based on your specific assay requirements.
Formulation	PBS with 0.09% Sodium Azide, 50% Glycerol, pH 7.3.
Isotype	IgG
Molecular Weight	Protein Mw: 202kDa Observed Mw: 202kDa
Storage Instruction	Store at -20°C for up to 1 year from the date of receipt, and avoid repeat freeze-thaw cycles.

TARGET INFORMATION

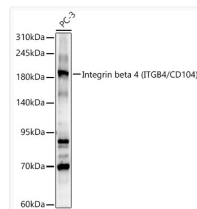
Gene ID	3691
Gene Symbol	ITGB4
UniProt ID	ITB4_HUMAN
Immunogen Region	611-710
Immunogen Sequence	DTICEINYSAIHPGLCEDLR SCVQCQAWGTGEKKGRTCEE CNFKVKMVDLKRAREEVVVR CSFRDEDDCTYSYTMEDGDG APGPNSTVLVHKKKDCPPGS
Specificity	Recombinant fusion protein containing a sequence corresponding to amino acids 611-710 of human Integrin beta 4 (ITGB4/CD104) (NP_000204.3).

ADDITIONAL INFORMATION

Note **STRICTLY FOR FURTHER SCIENTIFIC RESEARCH USE ONLY (RUO). MUST NOT TO BE USED IN DIAGNOSTIC OR THERAPEUTIC APPLICATIONS.**



Western blot analysis of various lysates, using Integrin beta 4 (ITGB4/CD104) Rabbit polyclonal antibody (STJ24260) at 1:900 dilution. Secondary antibody: HRP Goat Anti-Rabbit IgG (H+L) (STJS000856) at 1:10000 dilution. Lysates/proteins: 25µg per lane. Blocking buffer: 3% nonfat dry milk in TBST. Detection: ECL Basic Kit. Exposure time: 90s.



Western blot analysis of PC-3, using Integrin beta 4 (ITGB4/CD104) Rabbit polyclonal antibody (STJ24260) at 1:900 dilution. Secondary antibody: HRP Goat Anti-Rabbit IgG (H+L) (STJS000856) at 1:10000 dilution. Lysates/proteins: 25µg per lane. Blocking buffer: 3% nonfat dry milk in TBST. Detection: ECL Basic Kit. Exposure time: 20s.