

## Anti-ITGAV antibody (1021-1034) (STJ24252)

### GENERAL INFORMATION

Product Type	Primary antibodies
Applications	WB/IHC-P/IP/ELISA
Host / Source	Rabbit
Reactivity	Human/Mouse/Rat

### PRODUCT PROPERTIES

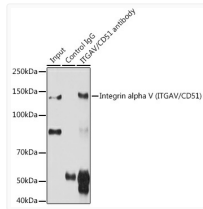
Clonality	Polyclonal
Concentration	Lot specific
Conjugation	Unconjugated
Purification	Affinity purification
Dilution Range	WB:1:1000-1:5000 IHC-P:1:50-1:200 IP:0.5 Mu g-4 Mu g antibody for 200 Mu g-400 Mu g extracts of whole cells ELISA:Recommended starting concentration is 1 Mu g/mL. Please optimize the concentration based on your specific assay requirements
Formulation	PBS with 0.09% Sodium Azide, 50% Glycerol, pH 7.3.
Isotype	IgG
Molecular Weight	Protein Mw: 116kDa Observed Mw: 130kDa
Storage Instruction	Store at -20°C for up to 1 year from the date of receipt, and avoid repeat freeze-thaw cycles.

### TARGET INFORMATION

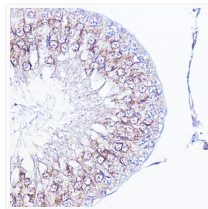
Gene ID	<a href="#">3685</a>
Gene Symbol	<a href="#">ITGAV</a>
UniProt ID	<a href="#">ITAV_HUMAN</a>
Immunogen Region	1021-1034
Immunogen Sequence	LKSSASFNVIEFPYKNLPIE DITNSTLVTTNVTWGIQAP MPVPVWVILAVLAGLLLLL VLVFMVYRMGFFKRVRRPQE EQEREQLQPHENGEGNSET
Specificity	A synthetic peptide corresponding to a sequence within amino acids 950-1048 of human Integrin alpha V (ITGAV/CD51) (NP_002201.1).

### ADDITIONAL INFORMATION

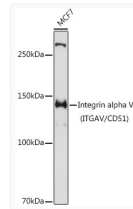
Note **STRICTLY FOR FURTHER SCIENTIFIC RESEARCH USE ONLY (RUO). MUST NOT TO BE USED IN DIAGNOSTIC OR THERAPEUTIC APPLICATIONS.**



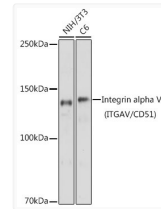
Immunoprecipitation analysis of 200 Mu g extracts of C6 cells using 3 Mu g Integrin alpha V (ITGAV/CD51) antibody (STJ24252). Western blot was performed from the immunoprecipitate using Integrin alpha V (ITGAV/CD51) antibody (STJ24252) at a dilution of 1:2000.



Immunohistochemistry analysis of Integrin alpha V (ITGAV/CD51) in paraffin-embedded rat testis using Integrin alpha V (ITGAV/CD51) Rabbit polyclonal antibody (STJ24252) at dilution of 1:100 (40x lens). Perform high pressure antigen retrieval with 10 mM citrate buffer pH 6.0 before commencing with immunohistochemistry staining protocol.



Western blot analysis of lysates from MCF7 cells, using Integrin alpha V (ITGAV/CD51) Rabbit polyclonal antibody (STJ24252) at 1:3000 dilution. Secondary antibody: HRP Goat Anti-Rabbit IgG (H+L) (STJS000856) at 1:10000 dilution. Lysates/proteins: 25 Mu g per lane. Blocking buffer: 3% nonfat dry milk in TBST. Detection: ECL Basic Kit. Exposure time: 10s.



Western blot analysis of various lysates using Integrin alpha V (ITGAV/CD51) Rabbit polyclonal antibody (STJ24252) at 1:3000 dilution. Secondary antibody: HRP Goat Anti-Rabbit IgG (H+L) (STJS000856) at 1:10000 dilution. Lysates/proteins: 25 Mu g per lane. Blocking buffer: 3% nonfat dry milk in TBST. Detection: ECL Basic Kit. Exposure time: 3s.