

Anti-ITGAM antibody (145-340) (STJ24251)

GENERAL INFORMATION

Product Type	Primary antibodies
Applications	WB/IHC-P/IF/ICC/ELISA
Host / Source	Rabbit
Reactivity	Human/Mouse/Rat

PRODUCT PROPERTIES

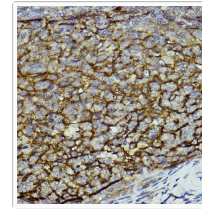
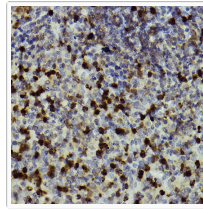
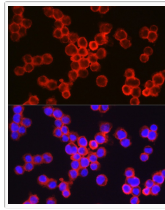
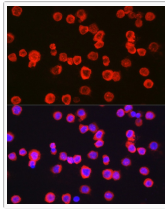
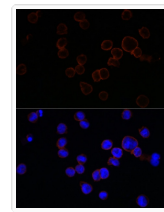
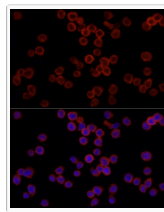
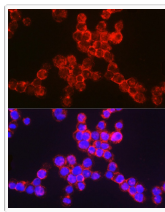
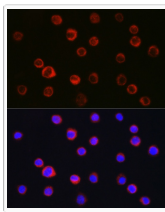
Clonality	Polyclonal
Concentration	Lot specific
Conjugation	Unconjugated
Purification	Affinity purification
Dilution Range	WB:1:100-1:500 IHC-P:1:50-1:200 IF/ICC:1:50-1:200 ELISA:Recommended starting concentration is 1 µg/mL. Please optimize the concentration based on your specific assay requirements.
Formulation	PBS with 0.09% Sodium Azide, 50% Glycerol, pH7.3.
Isotype	IgG
Molecular Weight	Protein Mw: 127kDa Observed Mw: 170kDa
Storage Instruction	Store at -20°C for up to 1 year from the date of receipt, and avoid repeat freeze-thaw cycles.

TARGET INFORMATION

Gene ID	3684
Gene Symbol	ITGAM
UniProt ID	ITAM_HUMAN
Immunogen Region	145-340
Immunogen Sequence	PQEDSDIAFLIDGSGSIIPH DFRRMKEFVSTVMEQLKSKK TLFSLMQYSEEFRIHFTFKE FQNNPNPRSLVKPITQLLGR THTATGIRKVVRELFNITNG ARKNAFKILVVITDGEKFGD PLGYEDVIPEADREGVIRYV IGVGDAFRSEKSRQELNTIA SKPPRDHVFQVNNFEALKTI QNQLREKIFAIEGTQT
Specificity	Recombinant fusion protein containing a sequence corresponding to amino acids 145-340 of CD11b/ITGAM (NP_000623.2).

ADDITIONAL INFORMATION

Note	STRICTLY FOR FURTHER SCIENTIFIC RESEARCH USE ONLY (RUO). MUST NOT TO BE USED IN DIAGNOSTIC OR THERAPEUTIC APPLICATIONS.
------	---

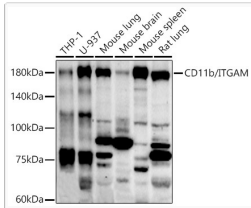


Immunofluorescence analysis of THP-1 cells using CD11b/ITGAM Rabbit polyclonal antibody (STJ24251) at dilution of 1:100 (40x lens). Secondary antibody: Cy3 Goat Anti-Rabbit IgG (H+L) at 1:500 dilution. Blue: DAPI for nuclear staining.

Immunofluorescence analysis of TF-1 cells using CD11b/ITGAM Rabbit polyclonal antibody (STJ24251) at dilution of 1:100 (40x lens). Secondary antibody: Cy3 Goat Anti-Rabbit IgG (H+L) at 1:500 dilution. Blue: DAPI for nuclear staining.

Immunohistochemistry analysis of CD11b/ITGAM in paraffin-embedded mouse spleen using CD11b/ITGAM Rabbit polyclonal antibody (STJ24251) at dilution of 1:100 (40x lens). Perform high pressure antigen retrieval with 10 mM citrate buffer pH 6.0 before commencing with immunohistochemistry staining protocol.

Immunohistochemistry analysis of CD11b/ITGAM in paraffin-embedded human tonsil using CD11b/ITGAM Rabbit polyclonal antibody (STJ24251) at dilution of 1:100 (40x lens). Perform high pressure antigen retrieval with 10 mM citrate buffer pH 6.0 before commencing with immunohistochemistry staining protocol.



Western blot analysis of various lysates using CD11b/ITGAM Rabbit polyclonal antibody (STJ24251) at 1:500 dilution. Secondary antibody: HRP Goat Anti-Rabbit IgG (H+L) (STJS000856) at 1:10000 dilution. Lysates/proteins: 25 Mu g per lane. Blocking buffer: 3% nonfat dry milk in TBST. Detection: ECL Enhanced Kit. Exposure time: 90s.