

Anti-ITGAL antibody (26-1086) (STJ24250)

GENERAL INFORMATION

Product Type	Primary antibodies
Applications	WB/IHC-P/IF/ICC/ELISA
Host / Source	Rabbit
Reactivity	Human/Mouse/Rat

PRODUCT PROPERTIES

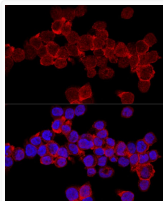
Clonality	Polyclonal
Concentration	Lot specific
Conjugation	Unconjugated
Purification	Affinity purification
Dilution Range	WB:1:100-1:500 IHC-P:1:50-1:100 IF/CC:1:50-1:100 ELISA:Recommended starting concentration is 1 μ g/mL. Please optimize the concentration based on your specific assay requirements.
Formulation	PBS with 0.05% Proclin300, 50% Glycerol, pH 7.3.
Isotype	IgG
Molecular Weight	Protein Mw: 129kDa Observed Mw: 180kDa
Storage Instruction	Store at -20°C for up to 1 year from the date of receipt, and avoid repeat freeze-thaw cycles.

TARGET INFORMATION

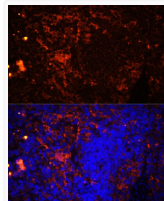
Gene ID	3683
Gene Symbol	ITGAL
UniProt ID	ITAL_HUMAN
Immunogen Region	26-1086
Immunogen Sequence	YNLDVRGARSFSPPRAGRHF GYRVLQVGNQVIVGAPGEGN STGSLYQCQSGTGHCPLPVTL RGSNYTSKYLGMTLATDPTD GSILFAAVQFSTSYKTEFDF SDYVKKRDKPDALLKHVKHML LLTNTFGAINVYATEVFREE LGARPDATKVLIIITDGEAT DSGNIDAAKDIIRYIIGIK HFQTKESQETLHKFASKPAS EFKILDTFEKLKDLFTLQ KKIYVIEGTSKQDLTSFNM
Specificity	Recombinant fusion protein containing a sequence corresponding to amino acids 26-340 of human CD11a/LFA-1A/ITGAL (NP_001107852.1).

ADDITIONAL INFORMATION

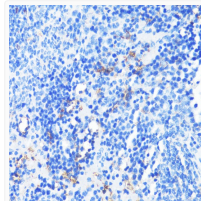
Note STRICTLY FOR FURTHER SCIENTIFIC RESEARCH USE ONLY (RUO). MUST NOT TO BE USED IN DIAGNOSTIC OR THERAPEUTIC APPLICATIONS.



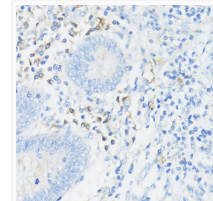
Confocal immunofluorescence analysis of THP-1 cells using CD11a/LFA-1A/ITGAL Polyclonal Antibody (STJ24250) at dilution of 1:200. Blue: DAPI for nuclear staining.



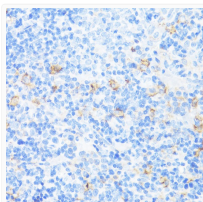
Immunofluorescence analysis of rat spleen using CD11a/LFA-1A/ITGAL Polyclonal Antibody (STJ24250) at dilution of 1:100 (40x lens). Blue: DAPI for nuclear staining.



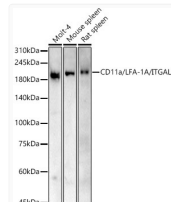
Immunohistochemistry analysis of paraffin-embedded mouse spleen using CD11a/LFA-1A/ITGAL antibody (STJ24250) at dilution of 1:100 (40x lens). Perform microwave antigen retrieval with 10 mM PBS buffer pH 7. 2 before commencing with immunohistochemistry staining protocol.



Immunohistochemistry analysis of paraffin-embedded human appendix using CD11a/LFA-1A/ITGAL antibody (STJ24250) at dilution of 1:100 (40x lens). Perform microwave antigen retrieval with 10 mM PBS buffer pH 7. 2 before commencing with immunohistochemistry staining protocol.



Immunohistochemistry analysis of paraffin-embedded rat spleen using CD11a/LFA-1A/ITGAL antibody (STJ24250) at dilution of 1:100 (40x lens). Perform microwave antigen retrieval with 10 mM PBS buffer pH 7. 2 before commencing with immunohistochemistry staining protocol.



Western blot analysis of various lysates, using CD11a/LFA-1A/ITGAL antibody (STJ24250) at 1:500 dilution. Secondary antibody: HRP Goat Anti-Rabbit IgG (H+L) (STJS000856) at 1:10000 dilution. Lysates/proteins: 25 μ g per lane. Blocking buffer: 3% nonfat dry milk in TBST. Detection: ECL Basic Kit. Exposure time: 180s.