

Anti-IRF5 antibody (1-200) (STJ24230)

GENERAL INFORMATION

Product Type	Primary antibodies
Applications	WB/IHC-P/ELISA
Host / Source	Rabbit
Reactivity	Human/Rat

PRODUCT PROPERTIES

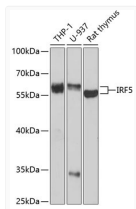
Clonality	Polyclonal
Concentration	Lot specific
Conjugation	Unconjugated
Purification	Affinity purification
Dilution Range	WB:1:500-1:2000 IHC-P:1:50-1:100 ELISA:Recommended starting concentration is 1 Mu g/mL. Please optimize the concentration based on your specific assay requirements.
Formulation	PBS with 0.02% Sodium Azide, 50% Glycerol, pH 7.3.
Isotype	IgG
Molecular Weight	Protein Mw: 56kDa Observed Mw: 56kDa/60kDa
Storage Instruction	Store at -20°C for up to 1 year from the date of receipt, and avoid repeat freeze-thaw cycles.

TARGET INFORMATION

Gene ID	3663
Gene Symbol	IRF5
UniProt ID	IRF5_HUMAN
Immunogen Region	1-200
Immunogen Sequence	MNQSIPVAPTPPRRVRLKPW LVAQVNSCQYPGLQWVNGEK KLFCIPWRHATRHHGSPDGD NTIFKAWAKETGKYTEGVDE ADPAKWKANLRCALNKSRLF RLIYDGPDRDMPQPYKIYEV CSNGPAPTDSQPPEYDFGA GEEEEEEELQRMPLPSLSLT EDVKWPPTLQPPTLRPPTLQ PPTLQPPVVLGPPAPDPSPSL
Specificity	Recombinant fusion protein containing a sequence corresponding to amino acids 1-200 of human IRF5 (NP_001092097.2).

ADDITIONAL INFORMATION

Note **STRICTLY FOR FURTHER SCIENTIFIC RESEARCH USE ONLY (RUO). MUST NOT TO BE USED IN DIAGNOSTIC OR THERAPEUTIC APPLICATIONS.**



Western blot analysis of extracts of various cell lines, using IRF5 antibody (STJ24230) at 1:1000 dilution. Secondary antibody: HRP Goat Anti-Rabbit IgG (H+L) (STJS000856) at 1:10000 dilution. Lysates/proteins: 25 Mu g per lane. Blocking buffer: 3% nonfat dry milk in TBST. Detection: ECL Enhanced Kit. Exposure time: 90s.