

## Anti-ILF3 antibody (1-270) (STJ24197)

### GENERAL INFORMATION

Product Type	Primary antibodies
Applications	WB/IHC-P/IF/ICC/IP/ELISA
Host / Source	Rabbit
Reactivity	Human/Mouse/Rat

### PRODUCT PROPERTIES

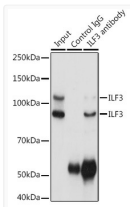
Clonality	Polyclonal
Concentration	Lot specific
Conjugation	Unconjugated
Purification	Affinity purification
Dilution Range	WB:1:500-1:2000 IHC-P:1:50-1:200 IF/ICC:1:50-1:200 IP:0.5 Mu g-4 Mu g antibody for 200 Mu g-400 Mu g extracts of whole cells ELISA:Recommended starting concentration is 1 Mu g/mL. Please optimize the concentration based on your specif
Formulation	PBS with 0.02% Sodium Azide, 50% Glycerol, pH 7.3.
Isotype	IgG
Molecular Weight	Protein Mw: 95kDa Observed Mw: 95kDa/120 kDa
Storage Instruction	Store at-20°C for up to 1 year from the date of receipt, and avoid repeat freeze-thaw cycles.

### TARGET INFORMATION

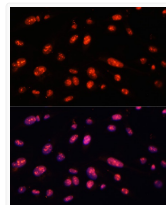
Gene ID	<a href="#">3609</a>
Gene Symbol	<a href="#">ILF3</a>
UniProt ID	<a href="#">ILF3_HUMAN</a>
Immunogen Region	1-270
Immunogen Sequence	MRPMRIFVNDRRHVMMAKHS VYPTQEELEAVQNMVSHTER ALKAVSDWIDEQEKGSEQA ESDNMDVPPEDDSKEGAGEQ KTEHMTRTLRGVMRVGLVAK GLLKKGDLDELVLCKEKP TTALLDKVADNLAIQLAAVT EDKYEILQSVDDAAIVIKNT KEPPLSLTHTLTPVVRREEM EKVLAGETLSVNDPPDVLDR QKCLAALASLRHAKWVQARA NGLKSCVIVIRVLRDLCTR
Specificity	Recombinant fusion protein containing a sequence corresponding to amino acids 1-270 of human ILF3 (NP_036350.2).

### ADDITIONAL INFORMATION

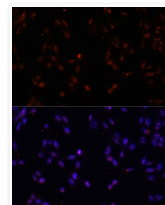
Note STRICTLY FOR FURTHER SCIENTIFIC RESEARCH USE ONLY (RUO). MUST NOT TO BE USED IN DIAGNOSTIC OR THERAPEUTIC APPLICATIONS.



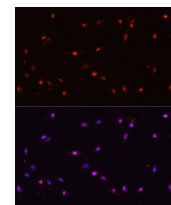
Immunoprecipitation analysis of 300 Mu g extracts of HeLa cells using 3 Mu g ILF3 antibody (STJ24197). Western blot was performed from the immunoprecipitate using ILF3 antibody (STJ24197) at a dilution of 1:1000.



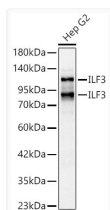
Immunofluorescence analysis of U-2 OS cells using ILF3 Rabbit polyclonal antibody (STJ24197) at dilution of 1:100. Secondary antibody: Cy3 Goat Anti-Rabbit IgG (H+L) at 1:500 dilution. Blue: DAPI for nuclear staining.



Immunofluorescence analysis of NIH-3T3 cells using ILF3 Rabbit polyclonal antibody (STJ24197) at dilution of 1:100. Secondary antibody: Cy3 Goat Anti-Rabbit IgG (H+L) at 1:500 dilution. Blue: DAPI for nuclear staining.



Immunofluorescence analysis of C6 cells using ILF3 Rabbit polyclonal antibody (STJ24197) at dilution of 1:100. Secondary antibody: Cy3 Goat Anti-Rabbit IgG (H+L) at 1:500 dilution. Blue: DAPI for nuclear staining.



Western blot analysis of lysates from Hep G2 cells using ILF3 Rabbit polyclonal antibody (STJ24197) at 1:1000 dilution. Secondary antibody:HRP Goat Anti-Rabbit IgG (H+L) (STJS000856) at 1:10000 dilution. Lysates/proteins: 25 Mu g per lane. Blocking buffer: 3% nonfat dry milk in TBST. Detection:ECL Basic Kit. Exposure time:0. 5s.