

Anti-IL2RA antibody (153-167) (STJ24183)

GENERAL INFORMATION

Product Type	Primary antibodies
Applications	WB/IHC-P/IF/ICC/FC/ELISA
Host / Source	Rabbit
Reactivity	Human/Mouse/Rat

PRODUCT PROPERTIES

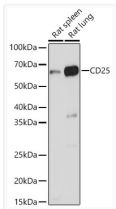
Clonality	Polyclonal
Concentration	Lot specific
Conjugation	Unconjugated
Purification	Affinity purification
Dilution Range	WB:1:500-1:1000 IHC-P:1:50-1:200 IF/CC:1:50-1:200 FC:1:50-1:200 ELISA:Recommended starting concentration is 1 μ g/mL. Please optimize the concentration based on your specific assay requirements.
Formulation	PBS with 0.05% Proclin300, 50% Glycerol, pH 7.3.
Isotype	IgG
Molecular Weight	Protein Mw: 31kDa Observed Mw: 60kDa
Storage Instruction	Store at -20°C for up to 1 year from the date of receipt, and avoid repeat freeze-thaw cycles.

TARGET INFORMATION

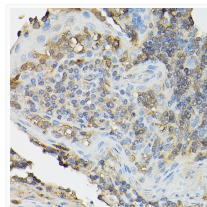
Gene ID	3559
Gene Symbol	IL2RA
UniProt ID	IL2RA_HUMAN
Immunogen Region	153-167
Immunogen Sequence	QKERKTTEMQSPMQPVDQAS LPGHCREPPPWENEATERIY HFVVGQMVMYYQCVQGYRALH RGP AESVCKMTHGKTRWTQP QLICTGEMETSQFPGEKPKQ ASPEGRPESETSCLVTTDF QIQTEMAATMETSIFTTEYQ VAVAGCVFLLISVLLLSGLT WQRRQRKSRRTI
Specificity	A synthetic peptide corresponding to a sequence within amino acids 101-200 of human CD25 (NP_000408.1).

ADDITIONAL INFORMATION

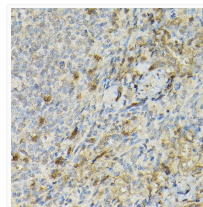
Note STRICTLY FOR FURTHER SCIENTIFIC RESEARCH USE ONLY (RUO). MUST NOT TO BE USED IN DIAGNOSTIC OR THERAPEUTIC APPLICATIONS.



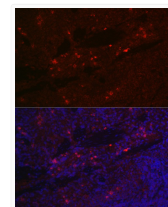
Western blot analysis of extracts of various cell lines, using CD25 antibody (STJ24183) at 1:1000 dilution. Secondary antibody: HRP Goat Anti-rabbit IgG (H+L) (STJS000856) at 1:10000 dilution. Lysates/proteins: 25 μ g per lane. Blocking buffer: 3% non-fat dry milk in TBST. Detection: ECL Basic Kit. Exposure time: 3s.



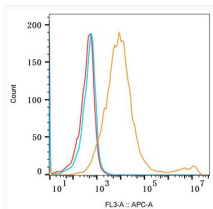
Immunohistochemistry analysis of paraffin-embedded human tonsil using CD25 rabbit polyclonal antibody (STJ24183) at dilution of 1:100 (40x lens). Perform high pressure antigen retrieval with 10 mM citrate buffer pH 6.0 before commencing with immunohistochemistry staining protocol.



Immunohistochemistry analysis of paraffin-embedded rat spleen using CD25 rabbit polyclonal antibody (STJ24183) at dilution of 1:100 (40x lens). Perform high pressure antigen retrieval with 10 mM citrate buffer pH 6.0 before commencing with immunohistochemistry staining protocol.



Immunofluorescence analysis of rat spleen cells using CD25 rabbit polyclonal antibody (STJ24183) at dilution of 1:100 (40x lens). Blue: DAPI for nuclear staining.



Flow cytometry: 293F Transfection cells (+) and 293F cells (-) were stained with rabbit IgG isotype control (10 μ g/mL, blue line) or CD25 rabbit polyclonal antibody (STJ24183, 2.5 μ g/mL orange line), followed by Goat anti-rabbit polyclonal antibody Alexa Fluor 647 (1:600 dilution) staining. Non-fluorescently stained Daudi cells was used as blank control (red line).