

Anti-IL2 antibody (21-153) (STJ24180)

GENERAL INFORMATION

Product Type	Primary antibodies
Applications	WB/ELISA
Host / Source	Rabbit
Reactivity	Human

PRODUCT PROPERTIES

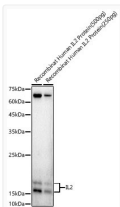
Clonality	Polyclonal
Concentration	Lot specific
Conjugation	Unconjugated
Purification	Affinity purification
Dilution Range	WB:1:500-1:1000 ELISA:Recommended starting concentration is 1 Mu g/mL. Please optimize the concentration based on your specific assay requirements.
Formulation	PBS with 0.02% Sodium Azide, 50% Glycerol, pH 7.3.
Isotype	IgG
Molecular Weight	Protein Mw: 18kDa Observed Mw: 15-20kDa
Storage Instruction	Store at -20°C for up to 1 year from the date of receipt, and avoid repeat freeze-thaw cycles.

TARGET INFORMATION

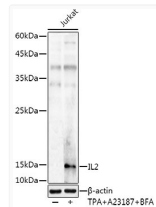
Gene ID	3558
Gene Symbol	IL2
UniProt ID	IL2_HUMAN
Immunogen Region	21-153
Immunogen Sequence	APTSSSTKKTQLQLEHLLLD LQMILNGINNYKNPKLTRML TFKFYMPKKATELKHLCLE EELKPLEEVLNLAQSKNFHL RPRDLISINIVIVLELKGSE TTFMCEYADETATIVEFLNR WITFCQSIISTLT
Specificity	Recombinant fusion protein containing a sequence corresponding to amino acids 21-153 of human IL2 (NP_000577.2).

ADDITIONAL INFORMATION

Note **STRICTLY FOR FURTHER SCIENTIFIC RESEARCH USE ONLY (RUO). MUST NOT TO BE USED IN DIAGNOSTIC OR THERAPEUTIC APPLICATIONS.**



Western blot analysis of recombinant Human IL2 Protein, using IL2 Rabbit polyclonal antibody (STJ24180) at 1:1000 dilution. Secondary antibody: HRP Goat Anti-Rabbit IgG (H+L) (STJS000856) at 1:10000 dilution. Lysates/proteins: 500pg/250pg per lane. Blocking buffer: 3% nonfat dry milk in TBST. Detection: ECL Enhanced Kit. Exposure time: 180s.



Western blot analysis of lysates from Jurkat cells, using IL2 Rabbit polyclonal antibody (STJ24180) at 1:1000 dilution. Jurkat cells were treated by TPA (40 nM), A23187 (2 Mu M) and Brefeldin A (300 ng/ml) for 0-24hours. Secondary antibody: HRP Goat Anti-Rabbit IgG (H+L) (STJS000856) at 1:10000 dilution. Lysates/proteins: 25 Mu g per lane. Blocking buffer: 3% nonfat dry milk in TBST. Detection: ECL Enhanced Kit. Exposure time: 180s.