

Anti-IL1RN antibody (24-177) (STJ24179)

GENERAL INFORMATION

Product Type	Primary antibodies
Applications	WB/IF/ICC/ELISA
Host / Source	Rabbit
Reactivity	Human/Mouse/Rat

PRODUCT PROPERTIES

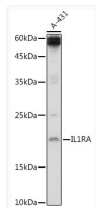
Clonality	Polyclonal
Concentration	Lot specific
Conjugation	Unconjugated
Purification	Affinity purification
Dilution Range	WB:1:500-1:1000 IF/CC:1:50-1:200 ELISA:Recommended starting concentration is 1 Mu g/mL. Please optimize the concentration based on your specific assay requirements.
Formulation	PBS with 0.02% Sodium Azide, 50% Glycerol, pH 7.3.
Isotype	IgG
Molecular Weight	Protein Mw: 20kDa Observed Mw: 18kDa
Storage Instruction	Store at -20°C for up to 1 year from the date of receipt, and avoid repeat freeze-thaw cycles.

TARGET INFORMATION

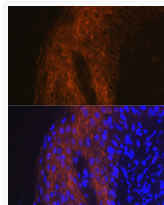
Gene ID	3557
Gene Symbol	IL1RN
UniProt ID	IL1RA_HUMAN
Immunogen Region	24-177
Immunogen Sequence	ICRPSGRKSSKMQAFRIWDV NQKTFYLRNNQLVAGYLOGP NVNLEEKIDVVPIEPHALFL GIHGGKMCLSCVKSGDETRL QLEAVNITDLSENKQDKRF AFIRSDSGPTTSFESAACPG WFLCTAMEADQPVSLTNMPD EGMVMTKFFYFQEDE
Specificity	Recombinant fusion protein containing a sequence corresponding to amino acids 24-177 of human IL1RA (NP_776214.1).

ADDITIONAL INFORMATION

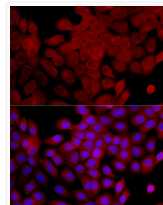
Note **STRICTLY FOR FURTHER SCIENTIFIC RESEARCH USE ONLY (RUO). MUST NOT TO BE USED IN DIAGNOSTIC OR THERAPEUTIC APPLICATIONS.**



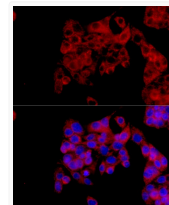
Western blot analysis of extracts of A-431 cells, using IL1RA antibody (STJ24179) at 1:1000 dilution. Secondary antibody: HRP Goat Anti-rabbit IgG (H+L) (STJS000856) at 1:10000 dilution. Lysates/proteins: 25 Mu g per lane. Blocking buffer: 3% non-fat dry milk in TBST. Detection: ECL Basic Kit. Exposure time: 90s.



Immunofluorescence analysis of human skin cancer using IL1RA rabbit polyclonal antibody (STJ24179) at dilution of 1:100 (40x lens). Blue: DAPI for nuclear staining.



Immunofluorescence analysis of A431 cells using IL1RA rabbit polyclonal antibody (STJ24179) at dilution of 1:100 (40x lens). Blue: DAPI for nuclear staining.



Immunofluorescence analysis of HepG2 cells using IL1RA rabbit polyclonal antibody (STJ24179) at dilution of 1:100 (40x lens). Blue: DAPI for nuclear staining.