

Anti-IL18R1 antibody (19-320) (STJ24172)

GENERAL INFORMATION

Product Type	Primary antibodies
Applications	WB/IHC-P/IF/ICC/ELISA
Host / Source	Rabbit
Reactivity	Human/Mouse/Rat

PRODUCT PROPERTIES

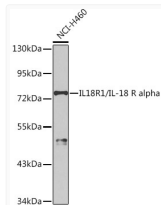
Clonality	Polyclonal
Concentration	Lot specific
Conjugation	Unconjugated
Purification	Affinity purification
Dilution Range	WB:1:500-1:1000 IHC-P:1:50-1:200 IF/CC:1:50-1:200 ELISA:Recommended starting concentration is 1 µg/mL. Please optimize the concentration based on your specific assay requirements.
Formulation	PBS with 0.02% Sodium Azide, 50% Glycerol, pH 7.3.
Isotype	IgG
Molecular Weight	Protein Mw: 62kDa Observed Mw: 75kDa
Storage Instruction	Store at -20°C for up to 1 year from the date of receipt, and avoid repeat freeze-thaw cycles.

TARGET INFORMATION

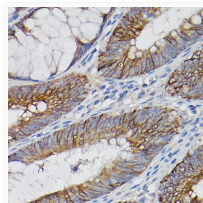
Gene ID	8809
Gene Symbol	IL18R1
UniProt ID	IL18R_HUMAN
Immunogen Region	19-320
Immunogen Sequence	AESC TSRPHITVVEGEPFYL KHCSCSLAHEIETTTKSWYK SSGSQEHVELNPRSSSRIAL HDCVLEFWPVELNDTGSYFF QMKNYTQKWKLVIRRNKHS CFTE RQVTSKIVEVKKFFQI TCENSYQTLVNSTSLYKNC KKLLENKNPTIKKNAEFE DQGYSCVHFLHHNGKLFNI TKTFNITIVEDRSNIVPVLL GPKLNHVAVELGKNVRLNCS ALLNEEDVIYWMFGEENG S
Specificity	Recombinant fusion protein containing a sequence corresponding to amino acids 19-320 of human IL18R1/IL-18 R alpha (NP_003846.1).

ADDITIONAL INFORMATION

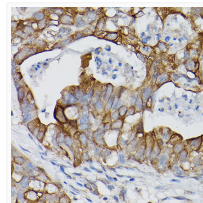
Note **STRICTLY FOR FURTHER SCIENTIFIC RESEARCH USE ONLY (RUO). MUST NOT TO BE USED IN DIAGNOSTIC OR THERAPEUTIC APPLICATIONS.**



Western blot analysis of extracts of NCI-H460 cells, using IL18R1/IL-18 R alpha antibody (STJ24172) at 1:1000 dilution. Secondary antibody: HRP Goat Anti-rabbit IgG (H+L) (STJS000856) at 1:10000 dilution. Lysates/proteins: 25 µg per lane. Blocking buffer: 3% non-fat dry milk in TBST. Detection: ECL Basic Kit. Exposure time: 90s.



Immunohistochemistry analysis of paraffin-embedded human colon carcinoma using IL18R1/IL-18 R alpha rabbit polyclonal antibody (STJ24172) at dilution of 1:100 (40x lens). Perform high pressure antigen retrieval with 10 mM citrate buffer pH 6.0 before commencing with immunohistochemistry staining protocol.



Immunohistochemistry analysis of paraffin-embedded human lung cancer using IL18R1/IL-18 R alpha rabbit polyclonal antibody (STJ24172) at dilution of 1:100 (40x lens). Perform high pressure antigen retrieval with 10 mM citrate buffer pH 6.0 before commencing with immunohistochemistry staining protocol.