

Anti-IL17A antibody (24-155) (STJ24168)

GENERAL INFORMATION

Product Type	Primary antibodies
Applications	WB/ELISA
Host / Source	Rabbit
Reactivity	Human

PRODUCT PROPERTIES

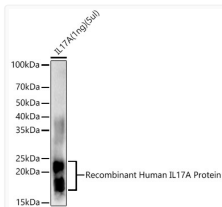
Clonality	Polyclonal
Concentration	Lot specific
Conjugation	Unconjugated
Purification	Affinity purification
Dilution Range	WB:1:500-1:1000 IF:1:50-1:200 ELISA:Recommended starting concentration is 1 Mu g/mL. Please optimize the concentration based on your specific assay requirements.
Formulation	PBS with 0.05% Proclin300, 50% Glycerol, pH 7.3.
Isotype	IgG
Molecular Weight	Protein Mw: 18kDa Observed Mw: 18-25kDa
Storage Instruction	Store at -20°C for up to 1 year from the date of receipt, and avoid repeat freeze-thaw cycles.

TARGET INFORMATION

Gene ID	3605
Gene Symbol	IL17A
UniProt ID	IL17_HUMAN
Immunogen Region	24-155
Immunogen Sequence	GITIPRNPGPCPNSDKNFPR TVMVNLIHNRNTNTNPKRS SDYYNRSTSPWNLHRNEDPE RYPSEIWEAKCRHLGCINAD GNVDYHMNSVPQQEILVLR REPPhCPNSFRLEKILVSVG CTCVTPIVHHVA
Specificity	Recombinant fusion protein containing a sequence corresponding to amino acids 24-155 of human IL17A (NP_002181.1).

ADDITIONAL INFORMATION

Note STRICTLY FOR FURTHER SCIENTIFIC RESEARCH USE ONLY (RUO). MUST NOT TO BE USED IN DIAGNOSTIC OR THERAPEUTIC APPLICATIONS.



Western blot analysis of various lysates, using IL17A Rabbit polyclonal antibody (STJ24168) at 1:500 dilution. Secondary antibody: HRP Goat Anti-Rabbit IgG (H+L) (STJS000856) at 1:10000 dilution. Lysates/proteins: 25 Mu g per lane. Blocking buffer: 3% nonfat dry milk in TBST. Detection: ECL Basic Kit. Exposure time: 30s.