

Anti-IL10 antibody (19-178) (STJ24157)

GENERAL INFORMATION

Product Type	Primary antibodies
Applications	WB/IHC-P/ELISA
Host / Source	Rabbit
Reactivity	Human/Mouse/Rat

PRODUCT PROPERTIES

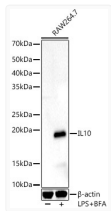
Clonality	Polyclonal
Concentration	Lot specific
Conjugation	Unconjugated
Purification	Affinity purification
Dilution Range	WB:1:500-1:1000 IHC-P:1:50-1:100 ELISA:Recommended starting concentration is 1 µg/mL. Please optimize the concentration based on your specific assay requirements.
Formulation	PBS with 0.05% Proclin300, 50% Glycerol, pH 7.3.
Isotype	IgG
Molecular Weight	Protein Mw: 21kDa Observed Mw: 18kDa
Storage Instruction	Store at -20°C for up to 1 year from the date of receipt, and avoid repeat freeze-thaw cycles.

TARGET INFORMATION

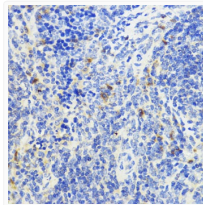
Gene ID	3586
Gene Symbol	IL10
UniProt ID	IL10_HUMAN
Immunogen Region	19-178
Immunogen Sequence	SPGQGTQSENSCTHFPGNLP NMLRDLRDAFSRVKTFQMK DQLDNLLKESLLEDFKGYL GCQALSEMIQFYLEEVMPQA ENQDPDIKAHVNSLGENLKT LRLRLRCHRFLPCENKSKA VEQVKNAFNLQEKGIYKAM SEFDIFINYIEAYMTMKIRN
Specificity	A synthetic peptide corresponding to a sequence within amino acids 19-178 of human IL10 (NP_000563.1).

ADDITIONAL INFORMATION

Note STRICTLY FOR FURTHER SCIENTIFIC RESEARCH USE ONLY (RUO). MUST NOT TO BE USED IN DIAGNOSTIC OR THERAPEUTIC APPLICATIONS.



Western blot analysis of various lysates, using IL10 Rabbit pAb (STJ24157) at 1:800 dilution. Raw264.7 cells were treated by LPS for 6 hours and Brefeldin A for 3 hours of stimulation. Secondary antibody: HRP-conjugated Goat anti-Rabbit IgG (H+L) (STJS000856) at 1:10000 dilution.
Lysates/proteins: 25 µg per lane.
Blocking buffer: 3% nonfat dry milk in TBST.
Detection: ECL Enhanced Kit
Exposure time: 90s.



Immunohistochemistry analysis of paraffin-embedded mouse spleen using IL10 Rabbit pAb (STJ24157) at dilution of 1:200 (40x lens). Microwave antigen retrieval performed with 0.01M PBS Buffer (pH 7.2) prior to immunohistochemistry staining.