

Anti-IKZF1 antibody (1-270) (STJ24155)

GENERAL INFORMATION

Product Type	Primary antibodies
Applications	WB/IF/ICC/ELISA/ChIP
Host / Source	Rabbit
Reactivity	Human/Mouse/Rat

PRODUCT PROPERTIES

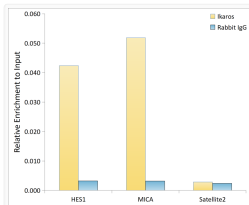
Clonality	Polyclonal
Concentration	Lot specific
Conjugation	Unconjugated
Purification	Affinity purification
Dilution Range	WB:1:500-1:1000 IF/CC:1:50-1:200 ELISA:Recommended starting concentration is 1 Mu g/mL. Please optimize the concentration based on your specific assay requirements. ChIP:5 Mu g antibody for 10 Mu g-15 Mu g of Chromatin
Formulation	PBS with 0.05% Proclin300, 50% Glycerol, pH 7.3.
Isotype	IgG
Molecular Weight	Protein Mw: 58kDa Observed Mw: 50-70kDa
Storage Instruction	Store at -20°C for up to 1 year from the date of receipt, and avoid repeat freeze-thaw cycles.

TARGET INFORMATION

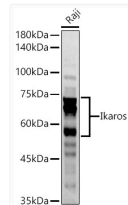
Gene ID	10320
Gene Symbol	IKZF1
UniProt ID	IKZF1_HUMAN
Immunogen Region	1-270
Immunogen Sequence	MDADEGQDMSQVSGKESPPV SDTPDEGDEPMPIDELSTT SGGQSSKSDRVVASNVKVE TQSDENGRACEMNGEECAE DLRMLDASGEKMNGSHRDQG SSALSGVGGIIRLPNGKCLKCD ICGIICIGPNVLMVHKRSHT GERPFQCNQCGASFTQKGNL LRHIKLSGGEKPFKCHLCNY ACRRRDALTGHLRTHSVIKE ETNHSEMAEDLCKIGSERSL VLDRLASNAVAKRKSSMPQK
Specificity	A synthetic peptide corresponding to a sequence within amino acids 1-270 of human Ikaros (NP_001207694.1).

ADDITIONAL INFORMATION

Note **STRICTLY FOR FURTHER SCIENTIFIC RESEARCH USE ONLY (RUO). MUST NOT TO BE USED IN DIAGNOSTIC OR THERAPEUTIC APPLICATIONS.**



Chromatin immunoprecipitation analysis of extracts of K-562 cells, using Ikaros antibody (STJ24155) and rabbit IgG. The amount of immunoprecipitated DNA was checked by quantitative PCR. Histogram was constructed by the ratios of the immunoprecipitated DNA to the input.



Western blot analysis of lysates from Raji cells, using Ikaros Rabbit polyclonal antibody (STJ24155) at 1:1000 dilution. Secondary antibody: HRP Goat Anti-Rabbit IgG (H+L) (STJS000856) at 1:10000 dilution. Lysates/proteins: 25 Mu g per lane. Blocking buffer: 3% nonfat dry milk in TBST. Detection: ECL Basic Kit. Exposure time: 30s.