

Anti-IKBKE antibody (497-716) (STJ24153)

GENERAL INFORMATION

Product Type	Primary antibodies
Applications	WB/IHC-P/IF/ICC/ELISA
Host / Source	Rabbit
Reactivity	Human/Mouse/Rat

PRODUCT PROPERTIES

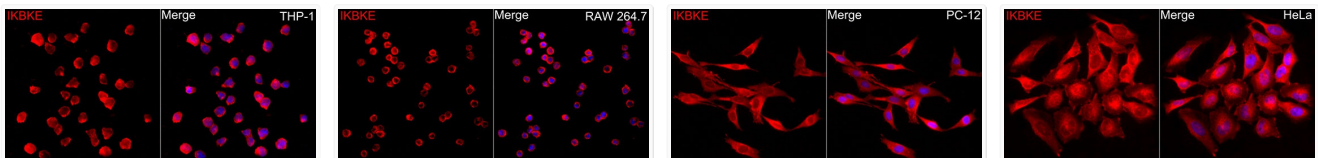
Clonality	Polyclonal
Concentration	Lot specific
Conjugation	Unconjugated
Purification	Affinity purification
Dilution Range	WB:1:500-1:2000 IHC-P:1:50-1:200 IF/ICC:1:50-1:200 ELISA:Recommended starting concentration is 1 µg/mL. Please optimize the concentration based on your specific assay requirements.
Formulation	PBS with 0.02% Sodium Azide, 50% Glycerol, pH7.3.
Isotype	IgG
Molecular Weight	Protein Mw: 80kDa Observed Mw: 80kDa/
Storage Instruction	Store at -20°C for up to 1 year from the date of receipt, and avoid repeat freeze-thaw cycles.

TARGET INFORMATION

Gene ID	9641
Gene Symbol	IKBKE
UniProt ID	IKKE_HUMAN
Immunogen Region	497-716
Immunogen Sequence	SRLRLTAEVL SRC SQNITET QESLSSLNREL VKSRDQVHE DRSIQIQCCCLDKMNFYKQ FKKSRMRPGLGYNEEQIHKL DKVNFSLAKRLLQVFQEEC VQKYQASLVTHGKRMRVVHE TRNHLRLVGC SVAACNTEAQ GVQESLSKLEELSHQLLQD RAKGAQASPPPIAPYSPTR KDLLLHMQELCEGMKLLASD LLDNNRIIERLNRVPAPPDV
Specificity	Recombinant fusion protein containing a sequence corresponding to amino acids 497-716 of human IKK Epsilon (NP_054721.1).

ADDITIONAL INFORMATION

Note STRICTLY FOR FURTHER SCIENTIFIC RESEARCH USE ONLY (RUO). MUST NOT TO BE USED IN DIAGNOSTIC OR THERAPEUTIC APPLICATIONS.

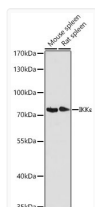


Immunofluorescence analysis of THP-1 cells using IKK Epsilon Rabbit polyclonal antibody (STJ24153) at dilution of 1:100 (40x lens). Secondary antibody: Cy3 Goat Anti-Rabbit IgG (H+L) at 1:500 dilution. Blue: DAPI for nuclear staining.

Immunofluorescence analysis of RAW264.7 cells using IKK Epsilon Rabbit polyclonal antibody (STJ24153) at dilution of 1:100 (40x lens). Secondary antibody: Cy3 Goat Anti-Rabbit IgG (H+L) at 1:500 dilution. Blue: DAPI for nuclear staining.

Immunofluorescence analysis of PC-12 cells using IKK Epsilon Rabbit polyclonal antibody (STJ24153) at dilution of 1:100 (40x lens). Secondary antibody: Cy3 Goat Anti-Rabbit IgG (H+L) at 1:500 dilution. Blue: DAPI for nuclear staining.

Immunofluorescence analysis of HeLa cells using IKK Epsilon Rabbit polyclonal antibody (STJ24153) at dilution of 1:100 (40x lens). Secondary antibody: Cy3 Goat Anti-Rabbit IgG (H+L) at 1:500 dilution. Blue: DAPI for nuclear staining.



Western blot analysis of various lysates using IKK Epsilon Rabbit polyclonal antibody (STJ24153) at 1:1000 dilution. Secondary antibody: HRP Goat Anti-Rabbit IgG (H+L) (STJS000856) at 1:10000 dilution. Lysates/ proteins: 25 µg per lane. Blocking buffer: 3 % nonfat dry milk in TBST. Detection: ECL Basic Kit. Exposure time: 60s.