

## Anti-IGF2BP1 antibody (478-577) (STJ24140)

### GENERAL INFORMATION

Product Type	Primary antibodies
Applications	WB/IHC-P/IF/ICC/ELISA
Host / Source	Rabbit
Reactivity	Human/Mouse/Rat

### PRODUCT PROPERTIES

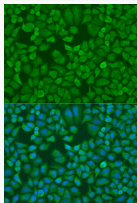
Clonality	Polyclonal
Concentration	Lot specific
Conjugation	Unconjugated
Purification	Affinity purification
Dilution Range	WB:1:500-1:2000 IHC-P:1:50-1:100 IF/ICC:1:50-1:200 ELISA:Recommended starting concentration is 1 $\mu$ g/mL. Please optimize the concentration based on your specific assay requirements.
Formulation	PBS with 0.02% Sodium Azide, 50% Glycerol, pH 7.3.
Isotype	IgG
Molecular Weight	Protein Mw: 63kDa Observed Mw: 71kDa
Storage Instruction	Store at -20°C for up to 1 year from the date of receipt, and avoid repeat freeze-thaw cycles.

### TARGET INFORMATION

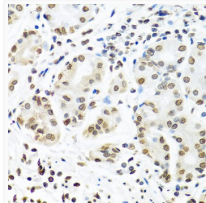
Gene ID	<a href="#">10642</a>
Gene Symbol	<a href="#">IGF2BP1</a>
UniProt ID	<a href="#">IF2B1_HUMAN</a>
Immunogen Region	478-577
Immunogen Sequence	NFFGPKKEEVKLETHIRVPAS AAGRVIKGGKTVNELQNLTAEEVVVPRDQTPDENDQVIV KIIGHFYASQMAQRKIRDIL AQVKQQHQKQSSNQAQARRK
Specificity	A synthetic peptide corresponding to a sequence within amino acids 478-577 of human IGF2BP1/IMP1 (NP_006537.3).

### ADDITIONAL INFORMATION

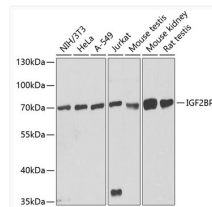
Note **STRICTLY FOR FURTHER SCIENTIFIC RESEARCH USE ONLY (RUO). MUST NOT TO BE USED IN DIAGNOSTIC OR THERAPEUTIC APPLICATIONS.**



Immunofluorescence analysis of U2OS cells using IGF2BP1/IMP1 antibody (STJ24140) at dilution of 1:100. Blue: DAPI for nuclear staining.



Immunohistochemistry analysis of paraffin-embedded human stomach using IGF2BP1/IMP1 antibody (STJ24140) at dilution of 1:100 (40x lens). Perform microwave antigen retrieval with 10 mM PBS buffer pH 7.2 before commencing with immunohistochemistry staining protocol.



Western blot analysis of extracts of various cell lines, using IGF2BP1/IMP1 antibody (STJ24140) at 1:1000 dilution. Secondary antibody: HRP Goat Anti-Rabbit IgG (H+L) (STJS000856) at 1:10000 dilution. Lysates/proteins: 25  $\mu$ g per lane. Blocking buffer: 3% nonfat dry milk in TBST. Detection: ECL Basic Kit. Exposure time: 90s.