

## Anti-IGF1 antibody (50-150) (STJ24135)

### GENERAL INFORMATION

Product Type	Primary antibodies
Applications	WB/IHC-P/ELISA
Host / Source	Rabbit
Reactivity	Human/Mouse

### PRODUCT PROPERTIES

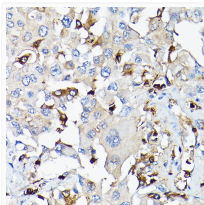
Clonality	Polyclonal
Concentration	Lot specific
Conjugation	Unconjugated
Purification	Affinity purification
Dilution Range	WB:1:500-1:2000 IHC-P:1:50-1:200 ELISA:Recommended starting concentration is 1 $\mu$ g/mL. Please optimize the concentration based on your specific assay requirements.
Formulation	PBS with 0.09% Sodium Azide, 50% Glycerol, pH7.3.
Isotype	IgG
Molecular Weight	Protein Mw: 22kDa Observed Mw: 18kDa
Storage Instruction	Store at -20°C for up to 1 year from the date of receipt, and avoid repeat freeze-thaw cycles.

### TARGET INFORMATION

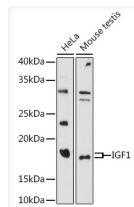
Gene ID	<a href="#">3479</a>
Gene Symbol	<a href="#">IGF1</a>
UniProt ID	<a href="#">IGF1_HUMAN</a>
Immunogen Region	50-150
Immunogen Sequence	PETLCGAELVDALQFVCGDR GFYFNKPTGYGSSSRAPQT GIVDECCFRSCDLRRLREMYC APLKPAKSARSVRAQRHTDM PKTQKEVHLKNASRGSAGNK N
Specificity	A synthetic peptide corresponding to a sequence within amino acids 50-150 of human IGF1 (NP_000609.1).

### ADDITIONAL INFORMATION

Note **STRICTLY FOR FURTHER SCIENTIFIC RESEARCH USE ONLY (RUO). MUST NOT TO BE USED IN DIAGNOSTIC OR THERAPEUTIC APPLICATIONS.**



Immunohistochemistry analysis of IGF1 in paraffin-embedded human lung cancer using IGF1 Rabbit polyclonal antibody (STJ24135) at dilution of 1:100 (40x lens). Perform high pressure antigen retrieval with 10 mM citrate buffer pH 6.0 before commencing with immunohistochemistry staining protocol.



Western blot analysis of various lysates using IGF1 Rabbit polyclonal antibody (STJ24135) at 1:1000 dilution. Secondary antibody: HRP Goat Anti-Rabbit IgG (H+L) (STJS000856) at 1:10000 dilution. Lysates/proteins: 25  $\mu$ g per lane. Blocking buffer: 3% nonfat dry milk in TBST. Detection: ECL Basic Kit. Exposure time: 180s.