

Anti-IFNG antibody (24-515) (STJ24133)

GENERAL INFORMATION

Product Type	Primary antibodies
Applications	WB/ELISA
Host / Source	Rabbit
Reactivity	Human

PRODUCT PROPERTIES

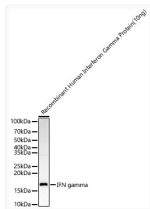
Clonality	Polyclonal
Concentration	Lot specific
Conjugation	Unconjugated
Purification	Affinity purification
Dilution Range	WB:1:1000-1:5000 ELISA:Recommended starting concentration is 1 µg/mL. Please optimize the concentration based on your specific assay requirements.
Formulation	PBS with 0.02% Sodium Azide, 50% Glycerol, pH 7.3.
Isotype	IgG
Molecular Weight	Protein Mw: 19kDa Observed Mw: 17kDa
Storage Instruction	Store at -20°C for up to 1 year from the date of receipt, and avoid repeat freeze-thaw cycles.

TARGET INFORMATION

Gene ID	3458
Gene Symbol	IFNG
UniProt ID	IFNG_HUMAN
Immunogen Region	24-515
Immunogen Sequence	VFGISYDSPDYTDESCTFKI SLRNFRSILSWELKNHSIVP THYTLTYIMSKPEDLKVVK NCANTTRSFCDLTDEWRSTH EAYVTVLEGFSGNTTLFSCS HNFWLAIMDSFEPPEFEIVG FTNHINVMVKFPSIVEELQ FDL
Specificity	Recombinant fusion protein containing a sequence corresponding to amino acids 24-166 of human IFN gamma (NP_997468.1).

ADDITIONAL INFORMATION

Note STRICTLY FOR FURTHER SCIENTIFIC RESEARCH USE ONLY (RUO). MUST NOT TO BE USED IN DIAGNOSTIC OR THERAPEUTIC APPLICATIONS.



Western blot analysis of recombinant Human Interferon Gamma Protein using IFN gamma Rabbit polyclonal antibody (STJ24133) at 1:2000 dilution. Secondary antibody: HRP Goat Anti-Rabbit IgG (H+L) (STJS000856) at 1:10000 dilution. Lysates/proteins: 10ng per lane. Blocking buffer: 3% nonfat dry milk in TBST. Detection: ECL Basic Kit. Exposure time: 10s.