

## Anti-IFNAR2 antibody (27-515) (STJ24131)

### GENERAL INFORMATION

Product Type	Primary antibodies
Applications	WB/IHC-P/IF/ICC/ELISA
Host / Source	Rabbit
Reactivity	Human/Mouse/Rat

### PRODUCT PROPERTIES

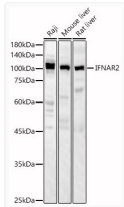
Clonality	Polyclonal
Concentration	Lot specific
Conjugation	Unconjugated
Purification	Affinity purification
Dilution Range	WB:1:1000-1:5000 IHC-P:1:50-1:100 IF/ICC:1:50-1:200 ELISA:Recommended starting concentration is 1 Mu g/mL. Please optimize the concentration based on your specific assay requirements.
Formulation	PBS with 0.05% Proclin300, 50% Glycerol, pH 7.3.
Isotype	IgG
Molecular Weight	Protein Mw: 58kDa Observed Mw: 95kDa/58kDa
Storage Instruction	Store at -20°C for up to 1 year from the date of receipt, and avoid repeat freeze-thaw cycles.

### TARGET INFORMATION

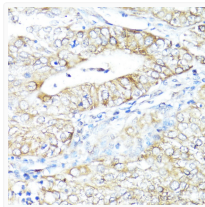
Gene ID	<a href="#">3455</a>
Gene Symbol	<a href="#">IFNAR2</a>
UniProt ID	<a href="#">INAR2_HUMAN</a>
Immunogen Region	27-515
Immunogen Sequence	ISYDSPDYTDESCTFKISLR NFRSILSWELKNHSIVPTHY TLLYTIMSKPEDLKVVKNCA NTRRSFCDLTDEWRSTHEAY VTVLEGFSGNNTLFCSSHNF WLAIMDSFEPPEFEIVGFTN HINVMVKFPSIVEEELQFDL SLVIEEQSEGIVKKHKPEIK GNMSGNFTYIIDKLIPNTNY CVSVYLEHSDEQAVIKSPLK CTTLLPPGQESESAESA
Specificity	Recombinant fusion protein containing a sequence corresponding to amino acids 27-243 of human IFNAR2 (NP_997468.1).

### ADDITIONAL INFORMATION

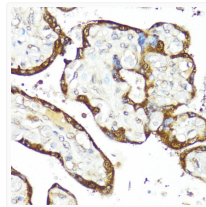
Note STRICTLY FOR FURTHER SCIENTIFIC RESEARCH USE ONLY (RUO). MUST NOT TO BE USED IN DIAGNOSTIC OR THERAPEUTIC APPLICATIONS.



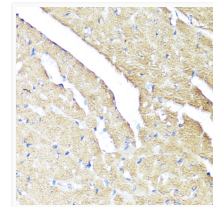
Western blot analysis of various lysates, using IFNAR2 antibody (STJ24131) at 1:2000 dilution. Secondary antibody: HRP Goat Anti-rabbit IgG (H+L) (STJS000856) at 1:10000 dilution. Lysates/proteins: 25 Mu g per lane. Blocking buffer: 3% non-fat dry milk in TBST. Detection: ECL Basic Kit. Exposure time: 60s.



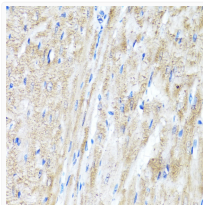
Immunohistochemistry analysis of paraffin-embedded Human uterine cancer using IFNAR2 antibody (STJ24131) at dilution of 1:100 (40x lens). Perform microwave antigen retrieval with 10 mM PBS buffer pH 7. 2 before commencing with immunohistochemistry staining protocol.



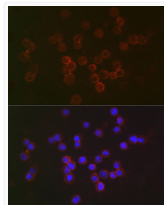
Immunohistochemistry analysis of paraffin-embedded Human placenta using IFNAR2 antibody (STJ24131) at dilution of 1:100 (40x lens). Perform microwave antigen retrieval with 10 mM PBS buffer pH 7. 2 before commencing with immunohistochemistry staining protocol.



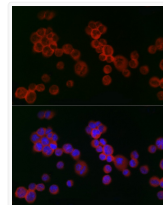
Immunohistochemistry analysis of paraffin-embedded mouse heart using IFNAR2 antibody (STJ24131) at dilution of 1:100 (40x lens). Perform microwave antigen retrieval with 10 mM PBS buffer pH 7. 2 before commencing with immunohistochemistry staining protocol.



Immunohistochemistry analysis of paraffin-embedded Rat heart using IFNAR2 antibody (STJ24131) at dilution of 1:100 (40x lens). Perform microwave antigen retrieval with 10 mM PBS buffer pH 7. 2 before commencing with immunohistochemistry staining protocol.



Immunofluorescence analysis of Raji cells using IFNAR2 rabbit polyclonal antibody (STJ24131) at dilution of 1:50 (40x lens). Blue: DAPI for nuclear staining.



Immunofluorescence analysis of K-562 cells using IFNAR2 rabbit polyclonal antibody (STJ24131) at dilution of 1:100 (40x lens). Blue: DAPI for nuclear staining.