

Anti-HSPB8 antibody (1-196) (STJ24102)

GENERAL INFORMATION

Product Type	Primary antibodies
Applications	WB/IHC-P/IF/ICC/ELISA
Host / Source	Rabbit
Reactivity	Human/Mouse/Rat

PRODUCT PROPERTIES

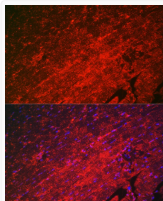
Clonality	Polyclonal
Concentration	Lot specific
Conjugation	Unconjugated
Purification	Affinity purification
Dilution Range	WB:1:1000-1:5000 IHC-P:1:50-1:200 IF/ICC:1:50-1:200 ELISA:Recommended starting concentration is 1 µg/mL. Please optimize the concentration based on your specific assay requirements.
Formulation	PBS with 0.05% Proclin300, 50% Glycerol, pH 7.3.
Isotype	IgG
Molecular Weight	Protein Mw: 22kDa Observed Mw: 22kDa
Storage Instruction	Store at -20°C for up to 1 year from the date of receipt, and avoid repeat freeze-thaw cycles.

TARGET INFORMATION

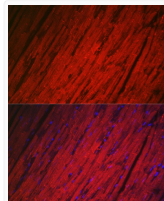
Gene ID	26353
Gene Symbol	HSPB8
UniProt ID	HSPB8_HUMAN
Immunogen Region	1-196
Immunogen Sequence	MADGQMPFSCHYPSRLRRDP FRDSPLSSRLDDGFGMDPF PDDLTASWPDWALPRLSSAW PGTLRSGMVPRGPTATARFG VPAEGRTPPFPGEWPKVCV NVHSFKPEELMVKTKDGYVE VSGKHEEKQEGGIVSKNFT KKIQLPAEVDPVTVFASLSP EGLLIEAPQVPPYSTFGES SFNNELPQDSQEVCT
Specificity	Recombinant fusion protein containing a sequence corresponding to amino acids 1-196 of human HSPB8/HSP22 (NP_055180.1).

ADDITIONAL INFORMATION

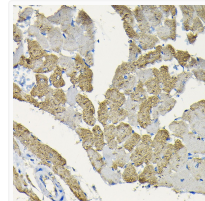
Note **STRICTLY FOR FURTHER SCIENTIFIC RESEARCH USE ONLY (RUO). MUST NOT TO BE USED IN DIAGNOSTIC OR THERAPEUTIC APPLICATIONS.**



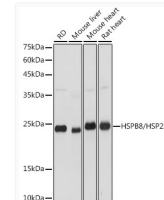
Immunofluorescence analysis of paraffin-embedded mouse heart using HSPB8/HSP22 Rabbit polyclonal antibody (STJ24102) at dilution of 1:100 (40x lens). Secondary antibody: Cy3 Goat Anti-Rabbit IgG (H+L) at 1:500 dilution. Blue: DAPI for nuclear staining.



Immunofluorescence analysis of paraffin-embedded rat heart using HSPB8/HSP22 Rabbit polyclonal antibody (STJ24102) at dilution of 1:100 (40x lens). Secondary antibody: Cy3 Goat Anti-Rabbit IgG (H+L) at 1:500 dilution. Blue: DAPI for nuclear staining.



Immunohistochemistry analysis of HSPB8/HSP22 in paraffin-embedded rat heart using HSPB8/HSP22 Rabbit polyclonal antibody (STJ24102) at dilution of 1:100 (40x lens). Perform high pressure antigen retrieval with 10 mM citrate buffer pH 6.0 before commencing with immunohistochemistry staining protocol.



Western blot analysis of various lysates using HSPB8/HSP22 Rabbit polyclonal antibody (STJ24102) at 1:3000 dilution. Secondary antibody: HRP Goat Anti-Rabbit IgG (H+L) (STJS000856) at 1:10000 dilution. Lysates/proteins: 25 µg per lane. Blocking buffer: 3% nonfat dry milk in TBST. Detection: ECL Basic Kit. Exposure time: 1s.