

Anti-HSPA8 antibody (510-615) (STJ24099)

GENERAL INFORMATION

Product Type	Primary antibodies
Applications	WB/IHC-P/IF/ICC/ELISA
Host / Source	Rabbit
Reactivity	Human/Mouse/Rat/Monkey

PRODUCT PROPERTIES

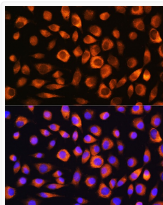
Clonality	Polyclonal
Concentration	Lot specific
Conjugation	Unconjugated
Purification	Affinity purification
Dilution Range	WB:1:500-1:1000 IHC-P:1:50-1:200 IF/ICC:1:50-1:200 ELISA:Recommended starting concentration is 1 Mu g/mL. Please optimize the concentration based on your specific assay requirements.
Formulation	PBS with 0.09% Sodium Azide, 50% Glycerol, pH 7.3.
Isotype	IgG
Molecular Weight	Protein Mw: 71kDa Observed Mw: 72kDa
Storage Instruction	Store at -20°C for up to 1 year from the date of receipt, and avoid repeat freeze-thaw cycles.

TARGET INFORMATION

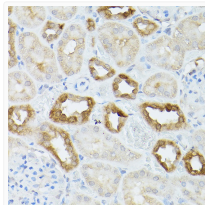
Gene ID	3312
Gene Symbol	HSPA8
UniProt ID	HSP7C_HUMAN
Immunogen Region	510-615
Immunogen Sequence	LSKEDIERMVQEAKEYKAED EKQRDKVSSKNSLESYAFNM KATVEDEKLQGKINDEKQK ILDKCNEIINWLDKNQTAEK EEFHQKQKLEKVCNPIITK LYQSAG
Specificity	Recombinant fusion protein containing a sequence corresponding to amino acids 510-615 of human Hsc70/HSPA8 (NP_006588.1).

ADDITIONAL INFORMATION

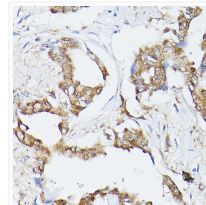
Note **STRICTLY FOR FURTHER SCIENTIFIC RESEARCH USE ONLY (RUO). MUST NOT TO BE USED IN DIAGNOSTIC OR THERAPEUTIC APPLICATIONS.**



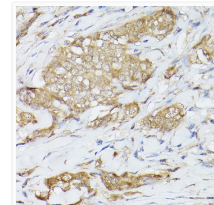
Immunofluorescence analysis of L929 cells using Hsc70/HSPA8 Rabbit polyclonal antibody (STJ24099) at dilution of 1:100. Blue: DAPI for nuclear staining.



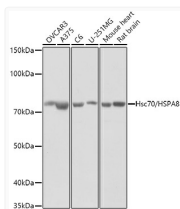
Immunohistochemistry analysis of paraffin-embedded mouse kidney using Hsc70/HSPA8 Rabbit polyclonal antibody (STJ24099) at dilution of 1:200 (40x lens). Perform high pressure antigen retrieval with 10 mM citrate buffer pH 6. 0 before commencing with immunohistochemistry staining protocol.



Immunohistochemistry analysis of paraffin-embedded human lung cancer using Hsc70/HSPA8 Rabbit polyclonal antibody (STJ24099) at dilution of 1:200 (40x lens). Perform high pressure antigen retrieval with 10 mM citrate buffer pH 6. 0 before commencing with immunohistochemistry staining protocol.



Immunohistochemistry analysis of paraffin-embedded human breast cancer using Hsc70/HSPA8 Rabbit polyclonal antibody (STJ24099) at dilution of 1:200 (40x lens). Perform high pressure antigen retrieval with 10 mM citrate buffer pH 6. 0 before commencing with immunohistochemistry staining protocol.



Western blot analysis of extracts of various cell lines, using (STJ24099) at 1:1000 dilution. Secondary antibody: HRP Goat Anti-Rabbit IgG (H+L) (STJS000856) at 1:10000 dilution. Lysates/proteins: 25 Mu g per lane. Blocking buffer: 3% nonfat dry milk in TBST. Detection: ECL Basic Kit. Exposure time: 3s.