

Anti-HRH1 antibody (250-340) (STJ24081)

GENERAL INFORMATION

Product Type	Primary antibodies
Applications	WB/ELISA
Host / Source	Rabbit
Reactivity	Human

PRODUCT PROPERTIES

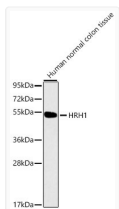
Clonality	Polyclonal
Concentration	Lot specific
Conjugation	Unconjugated
Purification	Affinity purification
Dilution Range	WB:1:500-1:2000 ELISA:Recommended starting concentration is 1 μ g/mL. Please optimize the concentration based on your specific assay requirements.
Formulation	PBS with 0.01% Thimerosal, 50% Glycerol, pH 7.3.
Isotype	IgG
Molecular Weight	Protein Mw: 56kDa Observed Mw: 56kDa
Storage Instruction	Store at -20°C for up to 1 year from the date of receipt, and avoid repeat freeze-thaw cycles.

TARGET INFORMATION

Gene ID	3269
Gene Symbol	HRH1
UniProt ID	HRH1_HUMAN
Immunogen Region	250-340
Immunogen Sequence	KPGKESPWEVLKRKPKDAGG GSVLKSPSQTPKEMKSPVVF SQEDDREVDKLYCFPLDIVH MQAAAEAGSSRDYVAVNRSHG QLKTDEQGLNT
Specificity	Recombinant fusion protein containing a sequence corresponding to amino acids 250-340 of human HRH1 (NP_000852.1).

ADDITIONAL INFORMATION

Note STRICTLY FOR FURTHER SCIENTIFIC RESEARCH USE ONLY (RUO). MUST NOT TO BE USED IN DIAGNOSTIC OR THERAPEUTIC APPLICATIONS.



Western blot analysis of lysates from Human normal colon tissue, using HRH1 Rabbit polyclonal antibody (STJ24081). Secondary antibody: HRP Goat Anti-Rabbit IgG (H+L) (STJS000856) at 1:10000 dilution. Lysates/proteins: 25 μ g per lane. Blocking buffer: 3% nonfat dry milk in TBST.