

## Anti-HP antibody (1-100) (STJ24076)

### GENERAL INFORMATION

Product Type	Primary antibodies
Applications	WB/IHC-P/ELISA
Host / Source	Rabbit
Reactivity	Human/Mouse/Rat

### PRODUCT PROPERTIES

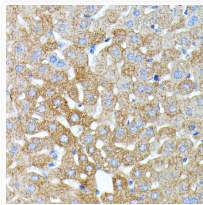
Clonality	Polyclonal
Concentration	Lot specific
Conjugation	Unconjugated
Purification	Affinity purification
Dilution Range	WB:1:500-1:2000 IHC-P:1:50-1:200 ELISA:Recommended starting concentration is 1 Mu g/mL. Please optimize the concentration based on your specific assay requirements.
Formulation	PBS with 0.02% Sodium Azide, 50% Glycerol, pH 7.3.
Isotype	IgG
Molecular Weight	Protein Mw: 45kDa Observed Mw: 45kDa
Storage Instruction	Store at -20°C for up to 1 year from the date of receipt, and avoid repeat freeze-thaw cycles.

### TARGET INFORMATION

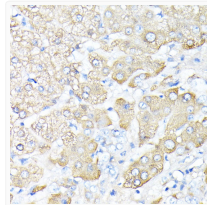
Gene ID	<a href="#">3240</a>
Gene Symbol	<a href="#">HP</a>
UniProt ID	<a href="#">HPT_HUMAN</a>
Immunogen Region	1-100
Immunogen Sequence	MSALGAVIALLLWGQLFAVD SGNVDVTIADDGCPKPPEIA HGYVEHSVRYQCKNYYKLRT EGDGVYTLNDKKQWINKAVG DKLPECEADDGCPKPPEIAH
Specificity	A synthetic peptide corresponding to a sequence within amino acids 1-100 of human Haptoglobin (Haptoglobin (HP) ) (NP_005134.1).

### ADDITIONAL INFORMATION

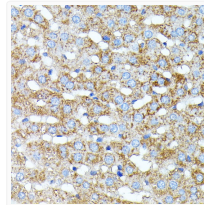
Note STRICTLY FOR FURTHER SCIENTIFIC RESEARCH USE ONLY (RUO). MUST NOT TO BE USED IN DIAGNOSTIC OR THERAPEUTIC APPLICATIONS.



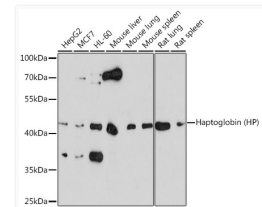
Immunohistochemistry analysis of paraffin-embedded mouse liver using Haptoglobin (Haptoglobin (HP) ) antibody (STJ24076) at dilution of 1:100 (40x lens). Perform microwave antigen retrieval with 10 mM PBS buffer pH 7. 2 before commencing with immunohistochemistry staining protocol.



Immunohistochemistry analysis of paraffin-embedded human liver cancer using Haptoglobin (Haptoglobin (HP) ) antibody (STJ24076) at dilution of 1:100 (40x lens). Perform microwave antigen retrieval with 10 mM PBS buffer pH 7. 2 before commencing with immunohistochemistry staining protocol.



Immunohistochemistry analysis of paraffin-embedded rat liver using Haptoglobin (Haptoglobin (HP) ) antibody (STJ24076) at dilution of 1:100 (40x lens). Perform microwave antigen retrieval with 10 mM PBS buffer pH 7. 2 before commencing with immunohistochemistry staining protocol.



Western blot analysis of extracts of various cell lines, using Haptoglobin (Haptoglobin (HP) ) antibody (STJ24076) at 1:10000 dilution. \_Secondary antibody: HRP Goat Anti-Rabbit IgG (H+L) (STJS000856) at 1:10000 dilution. \_Lysates/proteins: 25 Mu g per lane. \_Blocking buffer: 3% nonfat dry milk in TBST. \_Detection: ECL Enhanced Kit. \_Exposure time: 90s.