

Anti-HMGCS1 antibody (241-520) (STJ24047)

GENERAL INFORMATION

Product Type	Primary antibodies
Applications	WB/IF/ICC/ELISA
Host / Source	Rabbit
Reactivity	Human/Mouse/Rat

PRODUCT PROPERTIES

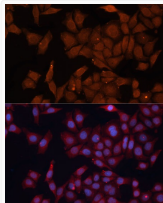
Clonality	Polyclonal
Concentration	Lot specific
Conjugation	Unconjugated
Purification	Affinity purification
Dilution Range	WB:1:1000-1:2000 IF/CC:1:50-1:200 ELISA:Recommended starting concentration is 1 μ g/mL. Please optimize the concentration based on your specific assay requirements.
Formulation	PBS with 0.01% Thimerosal, 50% Glycerol, pH 7.3.
Isotype	IgG
Molecular Weight	Protein Mw: 57kDa Observed Mw: 57kDa
Storage Instruction	Store at -20°C for up to 1 year from the date of receipt, and avoid repeat freeze-thaw cycles.

TARGET INFORMATION

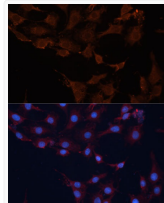
Gene ID	3157
Gene Symbol	HMGCS1
UniProt ID	HMCS1_HUMAN
Immunogen Region	241-520
Immunogen Sequence	HAQWQKEGNDKDFTLNDFGF MIFHSPYCKLVQKSLARMLL NDFLNDQNRDKNSIYSGLEA FGDVKLEDYFDRDVEKAFM KASSELSQKTKASLLVSNQ NGNMYTSSVYGSLASVLAQY SPQQLAGKRIGVFSYGSGLA ATLYSLKVTQDATPGSALDK ITASLCDLKSRLDSRTGVAP DVFAENMKLREDTHHLVNYI PQGSIDSLFEGTWYLVVRVDE KHRRTYARRPTPNDDDLDE
Specificity	Recombinant fusion protein containing a sequence corresponding to amino acids 241-520 of human HMGCS1 (NP_002121.4).

ADDITIONAL INFORMATION

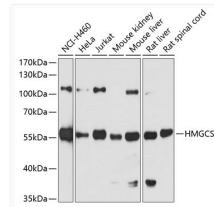
Note **STRICTLY FOR FURTHER SCIENTIFIC RESEARCH USE ONLY (RUO). MUST NOT TO BE USED IN DIAGNOSTIC OR THERAPEUTIC APPLICATIONS.**



Immunofluorescence analysis of HeLa cells using HMGCS1 Rabbit polyclonal antibody (STJ24047) at dilution of 1:100 (40x lens). Secondary antibody: Cy3 Goat Anti-Rabbit IgG (H+L) at 1:500 dilution. Blue: DAPI for nuclear staining.



Immunofluorescence analysis of C6 cells using HMGCS1 Rabbit polyclonal antibody (STJ24047) at dilution of 1:100 (40x lens). Secondary antibody: Cy3 Goat Anti-Rabbit IgG (H+L) at 1:500 dilution. Blue: DAPI for nuclear staining.



Western blot analysis of various lysates using HMGCS1 Rabbit polyclonal antibody (STJ24047) at 1:7000 dilution. Secondary antibody: HRP Goat Anti-Rabbit IgG (H+L) (STJS000856) at 1:10000 dilution. Lysates/proteins: 25 μ g per lane. Blocking buffer: 3% nonfat dry milk in TBST. Detection: ECL Basic Kit. Exposure time: 30s.