

Anti-HMGCR antibody (783-791) (STJ24046)

GENERAL INFORMATION

Product Type	Primary antibodies
Applications	WB/IHC-P/IF/ICC/ELISA
Host / Source	Rabbit
Reactivity	Human/Mouse/Rat

PRODUCT PROPERTIES

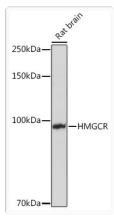
Clonality	Polyclonal
Concentration	Lot specific
Conjugation	Unconjugated
Purification	Affinity purification
Dilution Range	WB:1:1000-1:4000 IHC-P:1:50-1:100 IF/CC:1:50-1:200 ELISA:Recommended starting concentration is 1 Mu g/mL. Please optimize the concentration based on your specific assay requirements.
Formulation	PBS with 0.09% Sodium Azide, 50% Glycerol, pH 7.3.
Isotype	IgG
Molecular Weight	Protein Mw: 97kDa Observed Mw: 97kDa
Storage Instruction	Store at -20°C for up to 1 year from the date of receipt, and avoid repeat freeze-thaw cycles.

TARGET INFORMATION

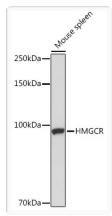
Gene ID	3156
Gene Symbol	HMGCR
UniProt ID	HMDH_HUMAN
Immunogen Region	783-791
Immunogen Sequence	VNINKNLVGSAMAGSIGGYN AHAANIVTAIYIACGQDAAQ NVGSSNCITLMEASGPTNED LYISCTMPSIEIGTVGGGTN LLPQQAQLQMLGVQGACKDN PGENARQLARIVCGTVMAGE LSLMAALAAGHLVKSHMIHN RSKINLQDLQGACTKKA
Specificity	A synthetic peptide corresponding to a sequence within amino acids 731-830 of human HMGCR (NP_000850.1).

ADDITIONAL INFORMATION

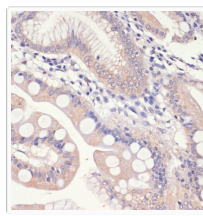
Note	STRICTLY FOR FURTHER SCIENTIFIC RESEARCH USE ONLY (RUO). MUST NOT TO BE USED IN DIAGNOSTIC OR THERAPEUTIC APPLICATIONS.
------	---



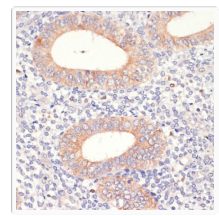
Western blot analysis of extracts of Rat brain, using HMGCR rabbit polyclonal antibody (STJ24046) at 1:1000 dilution. Secondary antibody: HRP Goat Anti-rabbit IgG (H+L) (STJS000856) at 1:10000 dilution. Lysates/proteins: 25 Mu g per lane. Blocking buffer: 3% non-fat dry milk in TBST. Detection: ECL Basic Kit. Exposure time: 1s.



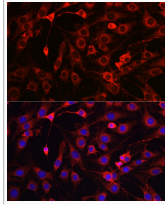
Western blot analysis of extracts of mouse spleen, using HMGCR rabbit polyclonal antibody (STJ24046) at 1:1000 dilution. Secondary antibody: HRP Goat Anti-rabbit IgG (H+L) (STJS000856) at 1:10000 dilution. Lysates/proteins: 25 Mu g per lane. Blocking buffer: 3% non-fat dry milk in TBST. Detection: ECL Basic Kit. Exposure time: 10s.



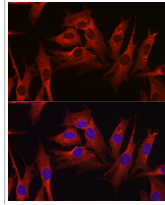
Immunohistochemistry analysis of paraffin-embedded human small intestine using HMGCR antibody (STJ24046) at dilution of 1:200 (40x lens). Perform microwave antigen retrieval with 10 mM PBS buffer pH 7.2 before commencing with immunohistochemistry staining protocol.



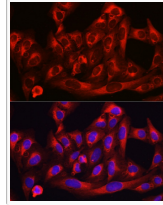
Immunohistochemistry analysis of paraffin-embedded human uterine cancer using HMGCR antibody (STJ24046) at dilution of 1:200 (40x lens). Perform microwave antigen retrieval with 10 mM PBS buffer pH 7.2 before commencing with immunohistochemistry staining protocol.



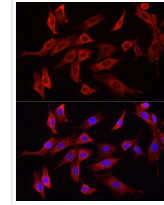
Immunofluorescence analysis of C6 cells using HMGCR rabbit polyclonal antibody (STJ24046) at dilution of 1:100 (40x lens). Blue: DAPI for nuclear staining.



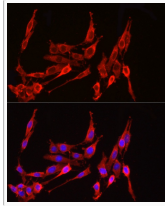
Immunofluorescence analysis of NIH-3T3 cells using HMGCR rabbit polyclonal antibody (STJ24046) at dilution of 1:100 (40x lens). Blue: DAPI for nuclear staining.



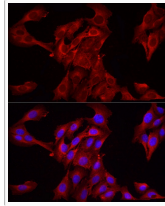
Immunofluorescence analysis of U-2 OS cells using HMGCR rabbit polyclonal antibody (STJ24046) at dilution of 1:100 (40x lens). Blue: DAPI for nuclear staining.



Immunofluorescence analysis of NIH/3T3 cells using HMGCR rabbit polyclonal antibody (STJ24046) at dilution of 1:200 (40x lens). Blue: DAPI for nuclear staining.



Immunofluorescence analysis of PC-12 cells using HMGCR rabbit polyclonal antibody (STJ24046) at dilution of 1:200 (40x lens). Blue: DAPI for nuclear staining.



Immunofluorescence analysis of U2OS cells using HMGCR rabbit polyclonal antibody (STJ24046) at dilution of 1:200 (40x lens). Blue: DAPI for nuclear staining.