

## Anti-HK1 antibody (21-219) (STJ24019)

### GENERAL INFORMATION

Product Type	Primary antibodies
Applications	WB/IHC-P/IF/ICC/IP/ELISA
Host / Source	Rabbit
Reactivity	Human/Mouse/Rat

### PRODUCT PROPERTIES

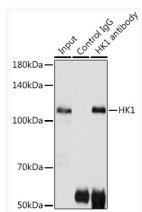
Clonality	Polyclonal
Concentration	Lot specific
Conjugation	Unconjugated
Purification	Affinity purification
Dilution Range	WB:1:500-1:1000 IHC-P:1:50-1:200 IF/ICC:1:50-1:200 IP:0.5 Mu g-4 Mu g antibody for 200 Mu g-400 Mu g extracts of whole cells ELISA:Recommended starting concentration is 1 Mu g/mL. Please optimize the concentration based on your specif
Formulation	PBS with 0.01% Thimerosal, 50% Glycerol, pH 7.3.
Isotype	IgG
Molecular Weight	Protein Mw: 102kDa Observed Mw: 102kDa
Storage Instruction	Store at -20°C for up to 1 year from the date of receipt, and avoid repeat freeze-thaw cycles.

### TARGET INFORMATION

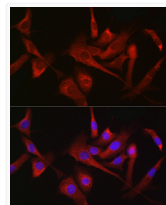
Gene ID	<a href="#">3098</a>
Gene Symbol	<a href="#">HK1</a>
UniProt ID	<a href="#">HXX1_HUMAN</a>
Immunogen Region	21-219
Immunogen Sequence	KIDKLYAMRLSDETLIDIM TRFRKEMKNGLSRDFNPTAT VKMLPTFVRSIPDGSEKGF IALDLGGSSFRILRVQVNH KQNVHMESEVYDTPENIVH GSGSQLFDHVAECLGDFMEK RKIKDKKLPVGFTFSPCCQ SKIDEAILITWTKRFKASGV EGADVVKLLNKAIKKRGDYD ANIVAVVNDTVGTMTCGY
Specificity	Recombinant fusion protein containing a sequence corresponding to amino acids 21-219 of human HK1 (NP_000179.2).

### ADDITIONAL INFORMATION

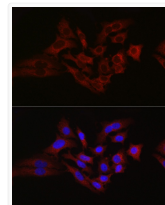
Note STRICTLY FOR FURTHER SCIENTIFIC RESEARCH USE ONLY (RUO). MUST NOT TO BE USED IN DIAGNOSTIC OR THERAPEUTIC APPLICATIONS.



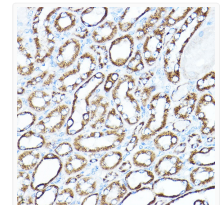
Immunoprecipitation analysis of 300 Mu g extracts of 293T cells using 3 Mu g HK1 antibody (STJ24019). Western blot was performed from the immunoprecipitate using HK1 antibody (STJ24019) at a dilution of 1:500.



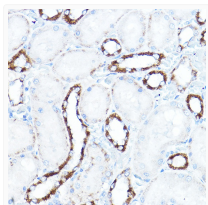
Immunofluorescence analysis of NIH/3T3 cells using [KO Validated] HK1 Rabbit polyclonal antibody (STJ24019) at dilution of 1:100 (40x lens). Secondary antibody: Cy3 Goat Anti-Rabbit IgG (H+L) at 1:500 dilution. Blue: DAPI for nuclear staining.



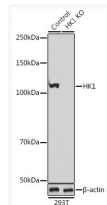
Immunofluorescence analysis of A-549 cells using [KO Validated] HK1 Rabbit polyclonal antibody (STJ24019) at dilution of 1:100 (40x lens). Secondary antibody: Cy3 Goat Anti-Rabbit IgG (H+L) at 1:500 dilution. Blue: DAPI for nuclear staining.



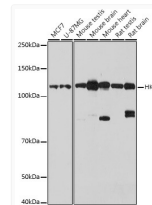
Immunohistochemistry analysis of HK1 in paraffin-embedded mouse kidney using HK1 Rabbit polyclonal antibody (STJ24019) at dilution of 1:100 (40x lens). Perform high pressure antigen retrieval with 10 mM citrate buffer pH 6.0 before commencing with immunohistochemistry staining protocol.



Immunohistochemistry analysis of HK1 in paraffin-embedded rat kidney using HK1 Rabbit polyclonal antibody (STJ24019) at dilution of 1:100 (40x lens). Perform high pressure antigen retrieval with 10 mM citrate buffer pH 6.0 before commencing with immunohistochemistry staining protocol.



Western blot analysis of lysates from wild type (WT) and HK1 knockout (KO) 293T cells, using [KO Validated] HK1 Rabbit polyclonal antibody (STJ24019) at 1:1000 dilution. Secondary antibody: HRP Goat Anti-Rabbit IgG (H+L) (STJS000856) at 1:10000 dilution. Lysates/proteins: 25 Mu g per lane. Blocking buffer: 3% nonfat dry milk in TBST. Detection: ECL Basic Kit. Exposure time: 10s.



Western blot analysis of various lysates using [KO Validated] HK1 Rabbit polyclonal antibody (STJ24019) at 1:1000 dilution. Secondary antibody: HRP Goat Anti-Rabbit IgG (H+L) (STJS000856) at 1:10000 dilution. Lysates/proteins: 25 Mu g per lane. Blocking buffer: 3% nonfat dry milk in TBST. Detection: ECL Basic Kit. Exposure time: 10s.